

# Checklist of Moths for Dumfries & Galloway



**Keith Naylor & Mark Pollitt**

2<sup>nd</sup> edition, March 2014

All text ©Keith Naylor, Dumfries and Galloway Environmental Resources Centre

This report can be referenced as:

Naylor, K.A. & Pollitt, M.S. 2014. *Checklist of Moths for Dumfries and Galloway*. 2nd Ed. Kirkcubrecht, Dumfries and Galloway Environmental Resources Centre.

Dedicated to the local informal entomological group 'The Grey Daggers' and all our local moth recorders.

### **Images credits**

© Copyright for all images remains with the photographer

Cover: Grey Dagger (Keith Naylor)

p3: Wood Tiger (Keith Naylor)

p6: Feathered Thorn (Steve Riddell)

p6: Blue-bordered Carpet (Keith Naylor)

p16: Red-green Carpet (Keith Naylor)

p27: *Hypatima rhomboidella* (Keith Naylor)

p27: *Eucosma campoliliana* (Brian Hammond)

## Introduction

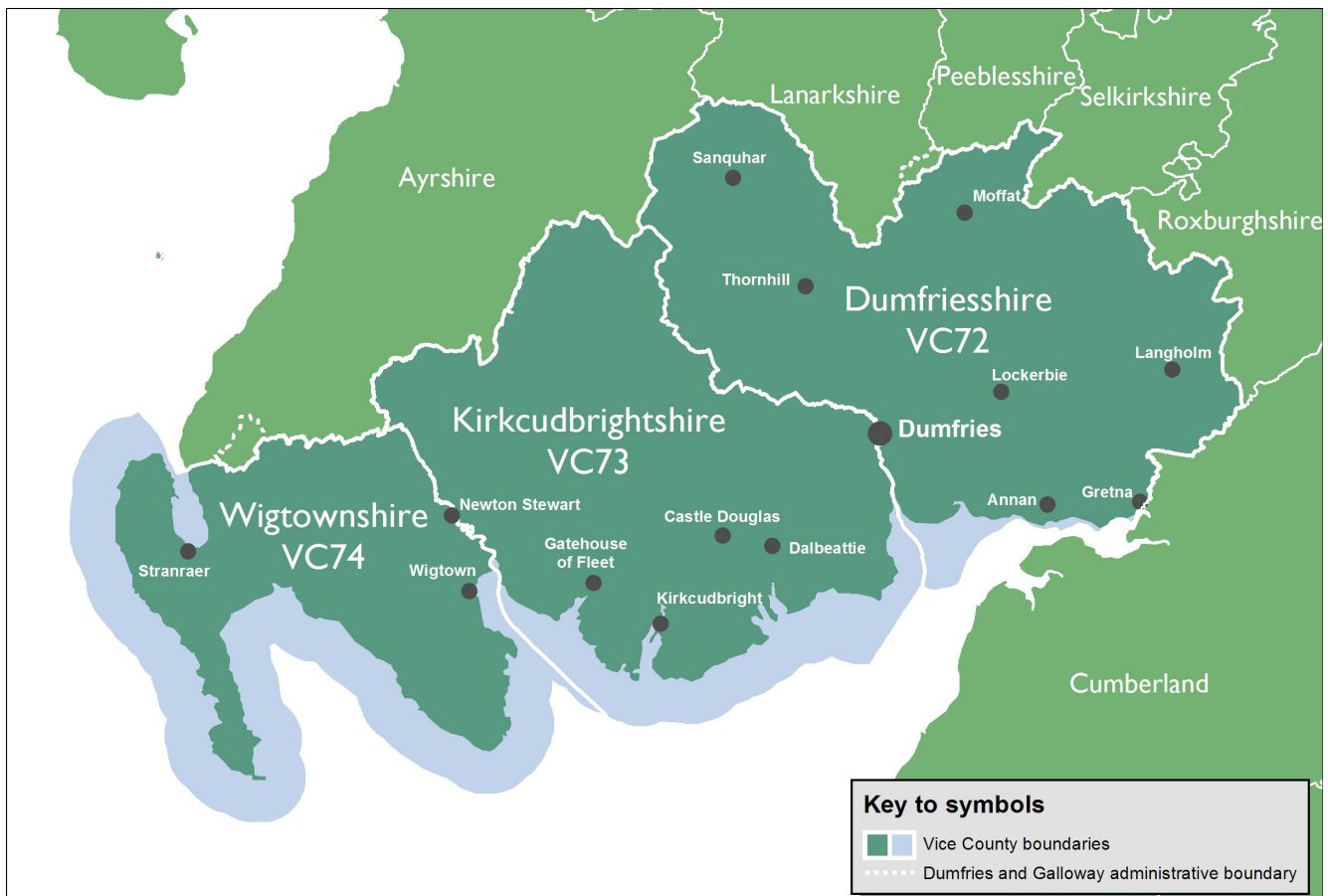
This is the second published Checklist of Moths for Dumfries and Galloway. This was necessary after the discovery of a large amount of data in the National Museums of Scotland, resulting in c. 50 new species and a better understanding of their distribution. The main aim of the checklist is to provide a current list of all species where verified and accepted records have been received from locations within the region. The checklist should be a useful resource to recorders within and outwith the region, whilst also providing some information on the local status of each species and the requirements for submitting records.

In this document the term 'Dumfries and Galloway' is used to refer to the collective area of these three Watsonian Vice Counties (VCs) of Dumfriesshire (VC72), Kirkcudbrightshire (VC73) and Wigtownshire (VC74) (see map below). The VC system is a recognised and stable set of areas unaffected by administrative changes and has long been used by naturalists for their recording, providing a useful means of comparing current and historical ecological information. It should be noted that the current administrative boundary of Dumfries & Galloway aligns closely, but not exactly, with that of the three VCs above. It does however include small areas of VC75 (Ayrshire) and VC77 (Lanarkshire) and records from these areas are not included in this checklist.



## Brief history of local recording

Rev. William Little born about 1797 in Jedburgh, was educated at the University of Edinburgh and submitted his moth records to the great lepidopterist of the time J. F. Stephens, who published them (1828-34) in the four volumes of his *Illustrations of British Entomology*, thus forming our first knowledge for the Region. William Lennon during the 1860s in the *Transactions of the Dumfries and Galloway Natural History and Antiquarian Society* published records of moths for Dumfriesshire and Kirkcudbrightshire. K. J. Morton (1900) and the Gordon brothers, Roger and Jack, also in the *Transactions* covered the moths of Wigtownshire in two papers, published in 1912-13 and 1919. Francis Buchanan White of Perth published a moth list for the Parishes of Colvend and Rockcliffe, Kirkcudbrightshire, in 1895, and, with a substantial number of moth sightings from around Gatehouse-



of-Fleet, Kirkcudbrightshire, during 1942-43 by Archibald G. B. Russell, gave us the first picture of moths in that VC. Sir Arthur Duncan & David Cunningham (1952) in the *Transactions* also gave a substantial update on the status of moths in Dumfriesshire and eastern Kirkcudbrightshire, with the first mention of the Mercury Vapour lamp being used in the Region. These are probably the main papers for the area, with further records gleaned from a number of journals that are referenced on the web site [www.dgmoths.org.uk](http://www.dgmoths.org.uk).

A visit to the National Museums of Scotland in Edinburgh revealed an enormous amount of records held in the 64 volumes of E. C. Pelham-Clinton's journals, who had recorded in every VC in Britain, and the staggering collection of Sir Arthur Duncan's moths, the majority of which were collected locally during a 50 year period (1932-84) amounting to c. 5,000 records. Unfortunately, the whereabouts of his notebooks is unknown.

Seven Rothamsted stations were set up from 1973 running until late 1993. Waterside Mains near Dabton and Caerlaverock (VC72), Bridge of Dee, Gatehouse of Fleet and Mabie Forest (VC73), Penninghame and Newton Stewart (VC74) were where the stations were situated, with data from their recorders' certainly enhancing our knowledge of moths across the Region.

In July 1982 the second meeting of the Scottish Entomologists' occurred at the Barony Agricultural College, Dumfriesshire. Traps were run there with 134 species being logged during the four-day period, 121 being recorded in one night, which was a Scottish site record. Further visits to our region occurred in 1996 and 2005.

John Heath, author of the 'Moths of Great Britain and Ireland' (MOGBI) during the 1980s, mapped out the species distribution from records held at the Biological Records Centre. Those records also improving our earlier knowledge.

Another important paper recorded in *the Ent. Rec. J. Var.* by A. M. Emmet detailed all the micro moths he had found with his sister while visiting in July, 1994, including leaf-mining records which was his passion.

The informal local Moth Group the 'Grey Daggers' held their first field meeting in 1996, and from these meetings much information has helped in our understanding of the moth species in our Region.

With more and more moth-ers came more records, so a national database has been set up - the National Moth Recording Scheme (NMRS) [www.mothscount.org.uk](http://www.mothscount.org.uk). This is the central repository where all local records are sent as a complete batch every year at the end of February. They are then prepared and sent on to the National Biodiversity Network (NBN) gateway which provides online access and mapping of the records.

## Verification of recent and historical records

All records added to the county database are subject to verification. This helps to ensure that the local database represents an accurate reflection of the region's moth fauna, at least as far as this can be reasonably achieved. Records are checked by the county recorder (e.g. against known flight period for the species) and further evidence may be sought from the original recorder (e.g. good quality photographs or specimens) for rarer species or where the flight times or locations are unusual. The records are also verified as part of sharing with the new National Moth Recording Scheme (NMRS). The national dataset enables records to be compared against dots maps for the UK and this has resulted in the identification of some unusual/suspect records that seem out of place. Records have also been verified by national experts as part of the compilation of the Scottish Macro Moth List. Although the county recorder has the final say, he/she will generally concur with other Scottish and UK experts where records are questionable.

Further micro-moth datasets, including Incurvarids, Leaf-miners, Gelechids, Pyralids & Crambids and Plume moths are sent to their respective recording schemes controllers. Any new VC micro-moth records are sent to J. R. Langmaid for publication in the *Ent. Rec. J. Var.*, and to M. R. Young who looks after the Scottish micro-moth list.

Inevitably as a result of this process there are a number of species that have either been recorded in journals or submitted as a record which have been found to be unacceptable for a number of reasons. Many of them are probable misidentifications or transcription errors. These records/species are never removed from the database, but are categorised as 'Pending' or 'Rejected' and could be reinstated at a future date as and when the species are reviewed in the light of newer information.

## Recording and identification

The recording of a moth sighting requires certain information to make it valid and useful. It would be helpful if all records provide as much of the information below as possible so that the maximum use can be made of the information supplied. As a bare minimum, all records should carry all of the fields marked with a \* below.

<b>Name*</b>	The English or Scientific name, as per this Checklist.
<b>Site*</b>	The name of the site should preferably be one that is shown on an OS map. This can be narrowed down even further, e.g. Mersehead RSPB Reserve: Shelter belt.
<b>Grid reference*</b>	A minimum of four figures (e.g. NX5590), but preferably six and above (e.g. NY430721).
<b>Vice County</b>	Helpful to locate records, particularly as it's impossible to know where every place is and there are many places sharing the same name (e.g. Bennan and Black Loch).
<b>Quantity</b>	Use zero if it was not possible to give a precise count, otherwise record the actual number.
<b>Stage</b>	Adult, Larva, Pupa, Egg, Cocoon, Leaf Mine, etc.
<b>Sex</b>	Male or female.
<b>Method</b>	Field observation, Robinson MV, Skinner MV, Heath Trap, Indoors, Sugaring, Dusking; these are a few of the likely methods used to record moths.
<b>Date*</b>	If records were made using a moth trap, this is the date the trap was set, not the following morning when it was emptied. Format dd/mm/yyyy (e.g. 21/11/2010) is preferable but if you have to use a date range it has to be like 18/08/2010-22/08/2010.
<b>Recorder*</b>	Record all the persons present, preferably as <i>Forename Surname</i> or <i>Initials Surname</i> (e.g. Fred Smith or F. Smith). No need to use titles like Dr. or Rev.
<b>Determiner</b>	This is the person who made the identification. There can be only one name here, and this is usually the same as the Recorder where trapping at home.
<b>Comments</b>	Any useful additional information, such as if you've taken a photo of the specimen or if a tricky species has been identified by certain methods (e.g. genitalia checked by dissection).

Certain species are very difficult to identify and require their examination under a microscope (usually dissection of genitalia) to confidently identify them. These species are flagged by an \* in the checklists. There are a number of species that are rare to the region (see status column in checklists) and the County Moth Recorder requests a good quality photo or the specimen to be retained for verification. If you record a species that is new to the region or any of the VCs then the same criteria apply.

Care is also needed separating the following species, so please consult the criteria on the local moth group web site or in your field guides:

Lesser Cream Wave/Cream Wave  
Red Twin-spot Carpet/Dark-barred Twin-spot Carpet  
Lead Belle/July Belle  
Yellow-ringed Carpet/Grey Mountain Carpet  
Water Carpet/Small Phoenix  
Dark Marbled Carpet/Common Marbled Carpet  
Pine Carpet/Grey Pine Carpet/Spruce Carpet  
The Rivulet/Small Rivulet  
Lesser Swallow Prominent/Swallow Prominent  
Scarce Footman/Common Footman  
Buff Footman/Dingy Footman  
The Champion/The Lychnis  
Chamomile Shark/The Shark  
Dark Chestnut/The Chestnut  
Copper Underwing/Svensson's Copper Underwing  
The Uncertain/The Rustic  
Plain Golden Y/Beautiful Golden Y.



## The Checklist tables

An explanation of the headers used in the Checklist are as follows:

<b>ABH</b>	The numbering system and taxonomic order allocated to all moths and butterflies by Agassiz, Beavan & Heckford (2013) in a 'Checklist of the Lepidoptera of the British Isles.'
<b>Vernacular</b>	English name of the moth.
<b>Taxon</b>	Scientific name of the moth. Species marked with an * can only be reliably identified by genitalia examination.
<b>Earliest</b>	The earliest date it has reliably been seen in the region. With species that require determination by genitalia dissection, the dates are those verified by this method.
<b>Latest</b>	The latest date it has reliably been seen in the region. With species that require determination by genitalia dissection, the dates are those verified by this method.
<b>Status</b>	The current status of the moth in the region, and not a particular VC. This is a subjective assessment by the County Moth Recorder, based broadly on the number of records of each species. With the micros a different method was used; a species that had occurred at only one site being classed as Rare, with a species recorded at a few sites having a Local status.
<b>VC72/VC73/VC74</b>	The latest year during which a species has been recorded within each of the three local vice counties. Where this date is only available as a range (e.g. 1992-1995), the list shows the earliest of these dates.

For species that are double brooded (i.e. produce more than one generation in a year) then earliest and latest dates for each brood are given where possible. However for many species there is no clear gap between first and second broods and only the earliest and latest dates across all broods are given.

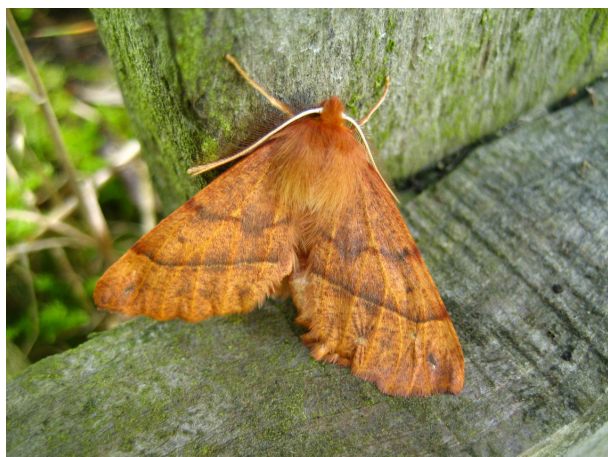
The Dumfries & Galloway Moth species list is presently at 1,063, comprising 472 macros and 591 micros. Combined totals for individual VCs are: Dumfriesshire (VC72) 847 (414), Kirkcudbrightshire (VC73) 957 (499), Wigtonshire (VC74) 757 (351), with micro-moth numbers in parenthesis.

## Contact address and further information

A growing resource of information can be found on the local moth recording website at [www.dgmoths.org.uk](http://www.dgmoths.org.uk)

Electronic records can be sent to the County Moth Recorder at [mothrecorder@dgerc.org.uk](mailto:mothrecorder@dgerc.org.uk) or paper records submitted to County Moth Recorder, c/o Dumfries & Galloway Environmental Resources Centre, Studio 1, Hillhead Mill, Kirkgunzeon, Dumfries DG2 8LA.

The Resources Centre can also be contacted directly for further information on 01387 760274 or [info@dgerc.org.uk](mailto:info@dgerc.org.uk)



# Macro Moths

ABH	Vernacular	Scientific	Earliest	Latest	Status	VC72	VC73	VC74
3.001	Orange Swift	<i>Triodia sylvina</i>	06-Jul	07-Sep	Local	2013	2013	2013
3.002	Common Swift	<i>Korscheltellus lupulina</i>	21-May	26-Aug	Local	2012	2013	2007
3.003	Map-winged Swift	<i>Korscheltellus fusconebulosa</i>	10-May	10-Aug	Common	2013	2013	2013
3.004	Gold Swift	<i>Phymatopus hecta</i>	24-May	28-Jul	Local	2013	2013	2012
3.005	Ghost Moth	<i>Hepialus humuli humuli</i>	01-Jun	13-Aug	Common	2013	2013	2012
50.001	Goat Moth	<i>Cossus cossus</i>	08-Sep	08-Sep	Extinct		1870	
52.003	Lunar Hornet Moth	<i>Sesia bembeciformis</i>	10-Jul	13-Jul	Rare	1837	2004	1961
52.008	Red-tipped Clearwing	<i>Synanthedon formicaeformis</i>	30-Jun	02-Jul	Rare	1970		1899
52.013	Currant Clearwing	<i>Synanthedon tipuliformis</i>	18-Jul	18-Jul	Extinct	1938		
52.016	Thrift Clearwing	<i>Pyropteron muscaeformis</i>	04-Jun	22-Jul	Local		2013	2013
54.002	The Forester	<i>Adscita statices statices</i>	02-Jun	19-Jul	Local		2013	
54.008	Six-spot Burnet	<i>Zygaena filipendulae stephensi</i>	05-Jun	08-Sep	Common	2012	2013	2013
54.009.1	Narrow-bordered Five-spot Burnet	<i>Zygaena loniceriae latomarginata</i>	26-Jun	01-Aug	Local		2013	
65.001	Scalloped Hook-tip	<i>Falcaria lacertinaria</i>	24-Apr	24-Aug	Common	2013	2013	2007
65.002	Oak Hook-tip	<i>Watsonalla binaria</i>	07-Aug	26-Aug	Rare		2012	
65.005	Pebble Hook-tip	<i>Drepana falcataria</i>	21-Apr	31-Aug	Common	2013	2013	2009
65.007	Chinese Character	<i>Cilix glaucata</i>	21-Apr	05-Sep	Common	2013	2013	2013
65.008	Peach Blossom	<i>Thyatira batis</i>	06-May	20-Aug	Common	2013	2013	2013
65.009	Buff Arches	<i>Habrosyne pyritoides</i>	08-Jul	16-Jul	Rare	1935	2012	
65.010	Figure of Eighty	<i>Tethea ocularis octogesimea</i>	10-Jul	10-Jul	Rare		1998	
65.011.1	Poplar Lutestring (ssp. scotica)	<i>Tethea or scotica</i>	11-Jul	11-Jul	Rare	1994		
65.013	Common Lutestring	<i>Ochropacha duplaris</i>	06-May	05-Sep	Common	2013	2013	2012
65.016	Yellow Horned	<i>Achlya flavicornis scotica</i>	23-Feb	17-May	Common	2013	2012	2006
66.001	December Moth	<i>Poecilocampa populi</i>	04-Oct	23-Dec	Common	2013	2013	2013
66.002	Pale Eggar	<i>Trichiura crataegi</i>	03-Aug	08-Sep	Rare	2007	2004	
66.005	Small Eggar	<i>Eriogaster lanestris</i>			Extinct		1862	
66.007.1	Northern Eggar	<i>Lasiocampa quercus callunae</i>	16-May	13-Aug	Common	2012	2013	2013
66.008	Fox Moth	<i>Macrothylacia rubi</i>	17-May	10-Jul	Common	2013	2013	2013
66.010	The Drinker	<i>Euthrix potatoria</i>	27-May	07-Sep	Common	2013	2013	2013
68.001	Emperor Moth	<i>Saturnia pavonia</i>	07-Apr	09-Jun	Common	2013	2013	2013
69.002	Eyed Hawk-moth	<i>Smerinthus ocellata</i>	29-May	06-Jul	Rare	2011	1862	1890
69.003	Poplar Hawk-moth	<i>Laothoe populi</i>	24-Apr	23-Sep	Common	2013	2013	2013
69.004	Convolvulus Hawk-moth	<i>Agrius convolvuli</i>	19-Aug	17-Oct	Migrant	2012	2012	2012
69.005	Death's-head Hawk-moth	<i>Acherontia atropos</i>	22-May	18-Oct	Migrant	1950	1945	1983
69.008	Narrow-bordered Bee Hawk-moth	<i>Hemaris tityus</i>	13-May	25-Jun	Rare	1978	2004	2011
69.010	Humming-bird Hawk-moth	<i>Macroglossum stellatarum</i>	18-Apr	14-Oct	Migrant	2011	2013	2013
69.014	Bedstraw Hawk-moth	<i>Hyles gallii</i>	10-Jun	09-Aug	Migrant	2005	2007	1888
69.015	Striped Hawk-moth	<i>Hyles livornica</i>	09-Jun	18-Jun	Migrant		2007	1966
69.016	Elephant Hawk-moth	<i>Deilephila elpenor</i>	06-May	23-Sep	Common	2013	2013	2012
69.017	Small Elephant Hawk-moth	<i>Deilephila porcellus</i>	16-May	03-Aug	Local	2011	2013	2011
69.018	Silver-striped Hawk-moth	<i>Hippotion celerio</i>	08-Oct	08-Oct	Rare	1900	1880	
70.008	Small Dusty Wave	<i>Idaea seriata</i>	23-Jun	28-Jul	Rare	2012	1976	1976
70.009	Satin Wave	<i>Idaea subsericeata</i>	02-Jun	03-Jul	Rare	1975	2010	
70.011	Single-dotted Wave	<i>Idaea dimidiata</i>	16-Jun	25-Aug	Common	2013	2013	2013
70.013	Small Fan-footed Wave	<i>Idaea biselata</i>	15-Jun	05-Sep	Common	2013	2013	2013
70.016	Riband Wave	<i>Idaea aversata</i>	28-May	12-Sep	Common	2013	2013	2013
70.018	Plain Wave	<i>Idaea straminata</i>	07-Jul	31-Jul	Rare	2013	2012	1995
70.023	Mullein Wave	<i>Scopula marginepunctata</i>	25-Jun	04-Sep	Rare		2013	2006
70.025	Lesser Cream Wave	<i>Scopula immutata</i>	16-Jun	28-Jul	Local	2013	2013	
70.026	Smoky Wave	<i>Scopula ternata</i>	10-Jun	28-Jul	Local	2013	2013	2013
70.027	Cream Wave	<i>Scopula floslactata floslactata</i>	14-May	12-Aug	Local	2013	2012	1989
70.029	Blood-vein	<i>Timandra comae</i>	03-Jun	12-Jul	Rare		2007	
70.032	Birch Mocha	<i>Cyclophora albipunctata</i>	19-Jun	08-Jul	Rare	1982	1996	
70.037	Clay Triple-lines	<i>Cyclophora linearia</i>	27-Jul	27-Jul	Rare		2011	
70.038	The Vestal	<i>Rhodometra sacraria</i>	20-Jun	26-Oct	Migrant	2013	2013	2006
70.040	Lead Belle	<i>Scotopteryx mucronata scotica</i>	20-Jun	14-Jul	Rare		2010	1998
70.041	July Belle	<i>Scotopteryx luridata plumbaria</i>	14-Jun	05-Aug	Local	2010	2013	2013
70.045	Shaded Broad-bar	<i>Scotopteryx chenopodiata</i>	29-Jun	08-Sep	Common	2013	2013	2013

ABH	Vernacular	Scientific	Earliest	Latest	Status	VC72	VC73	VC74
70.046	Oblique Carpet	<i>Orthonama vittata</i>	20-May - 24-Jul	05-Aug - 22-Sep	Local	2013	2013	2013
70.047	The Gem	<i>Nycterosea obstipata</i>	16-May	30-Oct	Migrant	2013	2006	1975
70.048	Red Carpet	<i>Xanthorhoe decoloraria decoloraria</i>	04-Jun	04-Sep	Local	2013	2013	1911
70.049	Garden Carpet	<i>Xanthorhoe fluctuata fluctuata</i>	04-Apr	05-Oct	Common	2013	2013	2013
70.051	Red Twin-spot Carpet	<i>Xanthorhoe spadicearia</i>	19-Apr	03-Sep	Local	2013	2013	2009
70.052	Dark-barred Twin-spot Carpet	<i>Xanthorhoe ferrugata</i>	18-Apr	05-Sep	Common	2013	2013	2013
70.053	Flame Carpet	<i>Xanthorhoe designata</i>	08-Apr	20-Sep	Common	2013	2013	2013
70.054	Silver Ground Carpet	<i>Xanthorhoe montanata montanata</i>	07-May	28-Aug	Common	2013	2013	2013
70.059	Yellow Shell	<i>Campptogramma bilineata</i>	25-May	13-Sep	Common	2013	2013	2012
70.060	Small Argent & Sable	<i>Epirrhoe tristata</i>	01-Jun	19-Aug	Local	2012	2013	1999
70.061	Common Carpet	<i>Epirrhoe alternata alternata</i>	21-Apr	22-Sep	Common	2013	2013	2013
70.063	Galium Carpet	<i>Epirrhoe galiata</i>	17-May - 21-Jul	30-Jul - 10-Aug	Scarce	2009	2005	2013
70.064	Cloaked Carpet	<i>Euphyia biangulata</i>	05-Jul	21-Jul	Rare	2005	2011	
70.066	Shoulder Stripe	<i>Earophila badiata</i>	22-Mar	27-May	Common	2013	2013	1978
70.067	The Streamer	<i>Anticlea derivata</i>	22-Mar	12-Jun	Local	2013	2011	2011
70.068	Beautiful Carpet	<i>Mesoleuca albicillata</i>	08-Jun	27-Aug	Local	2013	2013	1995
70.069	Dark Spinach	<i>Pelurga comitata</i>	02-Jul	24-Aug	Scarce	2013	2011	2011
70.070	The Mallow	<i>Larentia clavaria</i>			Extinct	1820	1870	1906
70.072	Grey Mountain Carpet	<i>Entephria caesiata</i>	22-Jun	18-Aug	Scarce	2012	2013	1998
70.074	July Highflyer	<i>Hydriomena furcata</i>	23-Jun	13-Oct	Abundant	2013	2013	2013
70.075	May Highflyer	<i>Hydriomena impluviata</i>	24-Apr	23-Jul	Scarce	2013	2013	2013
70.076	Ruddy Highflyer	<i>Hydriomena ruberata</i>	11-May	10-Jun	Scarce	2006	2012	1996
70.077	Pine Carpet	<i>Thera firmata</i>	27-Jun	05-Nov	Local	2013	2013	2010
70.078	Chestnut-coloured Carpet	<i>Thera cognata</i>	07-Jul	11-Aug	Scarce	1930	2001	1999
70.079	Spruce Carpet	<i>Thera britannica</i>	22-Apr - 05-Aug	10-Aug - 28-Nov	Common	2013	2013	2013
70.081	Grey Pine Carpet	<i>Thera obeliscata</i>	30-Apr - 04-Aug	13-Aug - 16-Nov	Common	2013	2013	2011
70.084	Blue-bordered Carpet	<i>Plemyria rubiginata plumbata</i>	01-Jul	02-Sep	Local	2013	2012	2012
70.085	Barred Yellow	<i>Cidaria fulvata</i>	26-Jun	17-Aug	Common	2013	2013	2011
70.086	Broken-barred Carpet	<i>Electrophaes corylata</i>	06-May	13-Jul	Local	2012	2013	2011
70.087	Purple Bar	<i>Cosmorhoe ocellata</i>	23-May	11-Sep	Common	2013	2013	2013
70.089	The Phoenix	<i>Eulithis prunata</i>	02-Jul	02-Sep	Local	2013	2013	1994
70.090	The Chevron	<i>Eulithis testata</i>	13-Jul	23-Sep	Common	2013	2013	2013
70.091	Northern Spinach	<i>Eulithis populata</i>	15-Jun	04-Sep	Common	2013	2013	2012
70.092	The Spinach	<i>Eulithis mellinata</i>	02-Jul	16-Aug	Rare	2011	2011	2009
70.093	Barred Straw	<i>Gandaritis pyraliata</i>	10-Jun	09-Sep	Common	2013	2013	2013
70.094	Small Phoenix	<i>Ecliptopera silaceata</i>	02-Apr - 10-Jul	15-Jul - 22-Sep	Common	2013	2013	2013
70.095	Red-green Carpet	<i>Chloroclysta siterata</i>	14-Aug - 27-Nov	02-Mar - 20-Jun	Common	2013	2013	2013
70.096	Autumn Green Carpet	<i>Chloroclysta miata</i>	25-Aug - 16-Nov	03-Apr - 21-Jun	Local	2013	2013	2000
70.097	Common Marbled Carpet	<i>Dysstroma truncata truncata</i>	03-May	27-Oct	Common	2013	2013	2013
70.098	Dark Marbled Carpet	<i>Dysstroma citrata citrata</i>	03-Jul	08-Oct	Common	2013	2013	2013
70.099	Beech-green Carpet	<i>Colostygia olivata</i>	20-Jul	05-Sep	Scarce	2012	2012	1903
70.100	Green Carpet	<i>Colostygia pectinataria</i>	10-May	23-Oct	Common	2013	2013	2013
70.101	Mottled Grey	<i>Colostygia multistrigaria</i>	08-Jan	10-May	Common	2013	2013	2013
70.102	Striped Twin-spot Carpet	<i>Coenotephria salicata latentaria</i>	05-May - 09-Jul	21-Jul - 22-Sep	Local	2013	2012	2013
70.103	Water Carpet	<i>Lampropteryx suffumata</i>	30-Mar	10-Jun	Common	2013	2013	2013
70.104	Devon Carpet	<i>Lampropteryx otregiata</i>	27-Aug	27-Aug	Rare			2013
70.105	Northern Winter Moth	<i>Operophtera fagata*</i>	21-Oct	30-Dec	Local	1982	1990	1977
70.106	Winter Moth	<i>Operophtera brumata*</i>	21-Oct	10-Mar	Common	2013	2013	2012
70.107	November Moth	<i>Epirrita dilutata*</i>	10-Sep	21-Nov	Common	2013	2011	2013
70.108	Pale November Moth	<i>Epirrita christyi*</i>	11-Sep	22-Nov	Common	2013	2011	1977
70.109	Autumnal Moth	<i>Epirrita autumnata*</i>	14-Sep	26-Nov	Common	2013	2011	1977
70.110	Small Autumnal Moth	<i>Epirrita filigrammaria*</i>	13-Aug	28-Sep	Local	1995	2004	1984
70.111	Small White Wave	<i>Asthena albulata</i>	01-Jun	30-Jun	Rare	1997	2011	
70.112	Dingy Shell	<i>Euchoeca nebulata</i>	16-Jun	09-Aug	Scarce	2008	2003	



ABH	Vernacular	Scientific	Earliest	Latest	Status	VC72	VC73	VC74
70.114	Small Yellow Wave	<i>Hydrelia flammeolaria</i>	06-Jun	21-Jul	Rare	2011	2011	
70.115	Welsh Wave	<i>Venusia cambrica</i>	28-May	29-Sep	Local	2013	2013	2012
70.120	Argent & Sable	<i>Rheumaptera hastata hastata</i>	31-May	26-Jul	Local	2012	2005	2011
70.121	Scallop Shell	<i>Hydria undulata</i>	22-Jun	11-Aug	Scarce	2012	2013	2006
70.123	The Tissue	<i>Triphosa dubitata</i>	16-Jul	07-Apr	Rare	1862	2011	2006
70.130	Chimney Sweeper	<i>Odezia atrata</i>	28-May	18-Aug	Common	2013	2013	2013
70.131	Twin-spot Carpet	<i>Mesotype didymata didymata</i>	02-Jun	29-Sep	Common	2013	2013	2013
70.132	The Rivulet	<i>Perizoma affinitata</i>	03-May	25-Sep	Common	2013	2013	2013
70.133	Small Rivulet	<i>Perizoma alchemillata</i>	31-May	31-Aug	Common	2013	2013	2013
70.134	Barred Rivulet	<i>Perizoma bifaciata</i>	03-Jul	08-Aug	Rare	2013	2013	2011
70.136	Pretty Pinion	<i>Perizoma blandiata blandiata</i>	01-Aug	07-Aug	Rare	1997	2008	
70.137	Grass Rivulet	<i>Perizoma albulata albulata</i>	07-Jun	03-Aug	Scarce	2013	2013	2011
70.138	Sandy Carpet	<i>Perizoma flavofasciata</i>	03-May	20-Aug	Common	2013	2013	2013
70.139	Barred Carpet	<i>Martania taeniata</i>	07-Jul	11-Aug	Rare	2011	2010	
70.141	Double-striped Pug	<i>Gymnoscelis rufifasciata</i>	26-Mar - 07-Jun	20-Jun - 23-Sep	Common	2013	2013	2013
70.142	The V-Pug	<i>Chloroclystis v-ata</i>	14-Apr - 26-Jun	06-Jul - 16-Sep	Common	2013	2013	2013
70.143	Sloe Pug	<i>Pasiphila chloerata</i>	20-Jun	10-Jul	Rare	2011	1998	
70.144	Green Pug	<i>Pasiphila rectangulata</i>	28-May	17-Aug	Common	2013	2013	2011
70.145	Bilberry Pug	<i>Pasiphila debiliata</i>	22-Jun	27-Jul	Rare		2002	
70.147	Slender Pug	<i>Eupithecia tenuiata</i>	09-Jun	18-Aug	Scarce	2012	2012	1906
70.149	Cloaked Pug	<i>Eupithecia abietaria</i>	13-Jul	13-Jul	Rare		2012	
70.151	Foxglove Pug	<i>Eupithecia pulchellata</i>	26-Apr	19-Aug	Common	2013	2013	2013
70.154	Marsh Pug	<i>Eupithecia pygmaeata</i>	08-Jun	03-Jul	Rare	1986	2011	2011
70.155	Netted Pug	<i>Eupithecia venosata venosata</i>	30-Apr	19-Jul	Rare	2000	1870	2000
70.156	Brindled Pug	<i>Eupithecia abbreviata</i>	18-Mar	04-Jun	Common	2013	2012	2012
70.157	Oak-tree Pug	<i>Eupithecia dodoneata</i>	22-Apr	03-Jun	Rare	2008	2013	
70.158	Juniper Pug	<i>Eupithecia pusillata</i>	11-Jul	11-Sep	Scarce	2012	2011	
70.160	White-spotted Pug	<i>Eupithecia tripunctaria</i>	08-May - 12-Jun	12-Jul - 11-Sep	Scarce	2013	2011	2009
70.161	Golden-rod Pug	<i>Eupithecia virgaureata</i>	21-Apr - 02-Jul	27-Jul - 02-Sep	Scarce	2013	2013	2011
70.162	Dwarf Pug	<i>Eupithecia tantillaria</i>	07-May	17-Jul	Scarce	2013	2012	2006
70.163	Larch Pug	<i>Eupithecia lariciata</i>	27-Apr	19-Aug	Local	2013	2010	2012
70.166	Plain Pug	<i>Eupithecia simpliciatata</i>	08-Jul	08-Jul	Rare		1870	2011
70.168	Narrow-winged Pug	<i>Eupithecia nanata</i>	23-Apr	24-Aug	Common	2013	2013	2013
70.169	Angle-barred Pug	<i>Eupithecia innotata</i>	09-Jul	06-Aug	Local	2012	2011	
70.171	Ochreous Pug	<i>Eupithecia indigata</i>	19-May	28-May	Rare	2012	2012	1890
70.172	Thyme Pug	<i>Eupithecia distinctaria</i>	13-Jun	04-Aug	Rare	1998	2003	2011
70.173	Lime-speck Pug	<i>Eupithecia centaureata</i>	02-May	25-Sep	Local	2011	2013	2013
70.175	Triple-spotted Pug	<i>Eupithecia trisignaria</i>	01-Jul	09-Aug	Rare	2004	2013	2006
70.176	Edinburgh Pug	<i>Eupithecia intricata intricata</i>	14-May	27-Jun	Rare	2012	2013	
70.177	Satyr Pug	<i>Eupithecia satyrata satyrata</i>	19-May	07-Jul	Scarce	2013	2013	1984
70.179	Wormwood Pug	<i>Eupithecia absinthiata</i>	02-Jun	23-Aug	Local	2013	2013	2013
70.181	Valerian Pug	<i>Eupithecia valerianata</i>	24-Jun	06-Aug	Rare	2012	2012	
70.182	Currant Pug	<i>Eupithecia assimilata</i>	07-May - 13-Jul	16-Jul - 20-Aug	Local	2013	2013	2006
70.183	Common Pug	<i>Eupithecia vulgata</i>	16-Apr - 13-Jul	19-Jul - 18-Aug	Common	2013	2013	2013
70.184	Mottled Pug	<i>Eupithecia exiguata</i>	26-Apr	25-Jun	Scarce	2013	2012	
70.187	Tawny Speckled Pug	<i>Eupithecia icterata</i>	21-Jun	13-Sep	Common	2013	2013	2013
70.189	Shaded Pug	<i>Eupithecia subumbrata</i>	17-Jun	5-Jul	Rare	2011	2007	1898
70.190	Grey Pug	<i>Eupithecia subfuscata</i>	04-May - 30-Jun	01-Jul - 20-Aug	Local	2013	2013	2013
70.191	Manchester Treble-bar	<i>Carsia sororiata anglica</i>	27-Jun	26-Aug	Scarce	2011	2012	2013
70.192	Treble-bar	<i>Aplocera plagiata plagiata</i>	04-Jun	14-Oct	Local	2012	2013	2011
70.195	The Streak	<i>Chesias legatella</i>	29-Aug	19-Nov	Common	2013	2013	2010
70.196	Broom-tip	<i>Chesias rufata rufata</i>	22-Apr	05-Aug	Local	2013	2013	
70.198	The Seraphim	<i>Lobophora halterata</i>	30-May	09-Jun	Rare	1978		
70.199	Small Seraphim	<i>Pterapherapteryx sexualata</i>	14-Jun	28-Jul	Rare	2006	1996	1976

ABH	Vernacular	Scientific	Earliest	Latest	Status	VC72	VC73	VC74
70.200	Yellow-barred Brindle	<i>Acasis viretata</i>	03-Apr - 11-Jun	23-Jul - 11-Sep	Local	2011	2012	2006
70.201	Barred Tooth-striped	<i>Trichopteryx polycommata</i>	07-May	07-May	Rare	2000		
70.202	Early Tooth-striped	<i>Trichopteryx carpinata</i>	10-Mar	31-May	Common	2013	2013	2012
70.203	Orange Underwing	<i>Archiearis parthenias</i>	30-Mar	30-Apr	Local	2013	2006	1999
70.205	The Magpie	<i>Abraxas grossulariata</i>	05-Jun	15-Sep	Common	2013	2013	2013
70.206	Clouded Magpie	<i>Abraxas sylvata</i>	07-May	02-Sep	Common	2013	2013	2013
70.207	Clouded Border	<i>Lomaspillis marginata</i>	02-May	24-Sep	Abundant	2013	2013	2013
70.214	Tawny-barred Angle	<i>Macaria liturata</i>	15-May	22-Aug	Common	2013	2013	2011
70.215	The V-Moth	<i>Macaria wauaria</i>	06-Jul	10-Aug	Scarce	2001	1979	1977
70.218	Latticed Heath	<i>Chiasmia clathrata clathrata</i>	11-May	03-Oct	Common	2013	2013	2011
70.222	Brown Silver-line	<i>Petrophora chlorosata</i>	08-Apr	02-Jul	Common	2013	2013	2013
70.223	Barred Umber	<i>Plagodis pulveraria</i>	04-May	27-Jun	Scarce	2013	2013	2006
70.224	Scorched Wing	<i>Plagodis dolabraria</i>	24-Apr	13-Jul	Local	2013	2013	2013
70.226	Brimstone Moth	<i>Opisthograptis luteolata</i>	06-May	14-Oct	Common	2013	2013	2013
70.227	Bordered Beauty	<i>Epione repandaria</i>	23-Jul	09-Sep	Scarce	2012	2013	2006
70.229	Speckled Yellow	<i>Pseudopanthera macularia</i>	29-Apr	08-Jul	Common	2011	2013	1989
70.231	Lilac Beauty	<i>Apeira syringaria</i>	24-Jun	02-Aug	Local	2010	2013	
70.233	August Thorn	<i>Ennomos quercinaria</i>	30-Jul	03-Oct	Rare	1999	2012	2013
70.234	Canary-shouldered Thorn	<i>Ennomos alniaria</i>	30-Jul	23-Oct	Common	2013	2013	2013
70.236	September Thorn	<i>Ennomos erosaria</i>	31-Jul	07-Oct	Local	2012	2013	1976
70.237	Early Thorn	<i>Selenia dentaria</i>	13-Mar - 19-Jun	07-Jul - 17-Sep	Common	2013	2013	2013
70.238	Lunar Thorn	<i>Selenia lunularia</i>	16-Apr	04-Jul	Local	2013	2013	2012
70.239	Purple Thorn	<i>Selenia tetralunaria</i>	04-Apr	07-Aug	Scarce	2013	2011	
70.240	Scalloped Hazel	<i>Odontopera bidentata</i>	21-Apr	11-Jul	Common	2013	2013	2013
70.241	Scalloped Oak	<i>Crocallis elinguaris</i>	04-Jul	07-Sep	Common	2013	2013	2013
70.243	Swallow-tailed Moth	<i>Ourapteryx sambucaria</i>	24-Jun	16-Aug	Common	2013	2013	2011
70.244	Feathered Thorn	<i>Colotois pennaria</i>	12-Sep	10-Dec	Common	2013	2013	2012
70.245	March Moth	<i>Alsophila aescularia</i>	01-Feb	03-May	Common	2013	2013	2013
70.247	Pale Brindled Beauty	<i>Phigalia pilosaria</i>	03-Dec	23-Apr	Common	2013	2013	2012
70.251	Oak Beauty	<i>Biston strataria</i>	06-Feb	21-Apr	Local	2013	2013	2006
70.252	Peppered Moth	<i>Biston betularia</i>	23-Apr	09-Aug	Common	2013	2013	2012
70.253	Spring Usher	<i>Agriopis leucophaearia</i>	10-Jan	19-Mar	Scarce	2014	2011	1976
70.254	Scarce Umber	<i>Agriopis aurantiaria</i>	10-Oct	19-Dec	Local	2013	2011	1975
70.255	Dotted Border	<i>Agriopis marginaria</i>	08-Jan	24-Apr	Local	2013	2013	2013
70.256	Mottled Umber	<i>Erannis defoliaria</i>	18-Sep	22-Feb	Common	2013	2013	2011
70.258	Willow Beauty	<i>Peribatodes rhomboidaria</i>	15-Jun	10-Sep	Common	2013	2013	2013
70.262	Bordered Grey	<i>Selidosema brunnearia scandinaviaria</i>	07-Sep	07-Sep	Rare			2012
70.263	Ringed Carpet	<i>Cleora cinctaria cinctaria</i>	19-Apr	31-May	Rare	2009	2012	1976
70.264	Satin Beauty	<i>Deileptenia ribeata</i>	04-Jul	16-Aug	Scarce	2013	2012	1997
70.265	Mottled Beauty	<i>Alcis repandata repandata</i>	02-Jun	02-Sep	Common	2013	2013	2013
70.266	Dotted Carpet	<i>Alcis jubata</i>	09-Jul	09-Sep	Local	2013	2013	2013
70.270	The Engrailed	<i>Ectropis crepuscularia*</i>	15-Mar	06-Aug	Common	2013	2013	2013
70.271	Small Engrailed	<i>Ectropis sp.</i>	04-Apr	08-Jul	Local	2013	2009	2012
70.274	Grey Birch	<i>Aethalura punctulata</i>	21-Apr	03-Jun	Scarce	2012	2012	2000
70.275	Common Heath	<i>Ematurga atomaria</i>	10-Apr	17-Jul	Common	2013	2013	2013
70.276	Bordered White	<i>Bupalus piniaria</i>	29-May	21-Aug	Common	2013	2013	2012
70.277	Common White Wave	<i>Cabera pusaria</i>	24-Apr	04-Sep	Common	2013	2013	2013
70.278	Common Wave	<i>Cabera exanthemata</i>	20-Apr	10-Oct	Common	2013	2013	2013
70.279	White-pinion Spotted	<i>Lomographa bimaculata</i>	05-May	03-Jul	Local	2013	2011	2008
70.280	Clouded Silver	<i>Lomographa temerata</i>	16-Apr	16-Jul	Common	2013	2013	2013
70.282	Early Moth	<i>Theria primaria</i>	13-Dec	07-Mar	Local	2013	2011	2011
70.283	Light Emerald	<i>Campaea margaritata</i>	07-Jun	16-Oct	Common	2013	2013	2013
70.284	Barred Red	<i>Hylaea fasciaria</i>	04-Jun	11-Sep	Common	2013	2013	2012
70.287	The Annulet	<i>Charissa obscurata</i>	02-Jul	25-Aug	Local	1976	2012	2012
70.288	Brussels Lace	<i>Cleorodes lichenaria</i>	10-Jun	29-Jul	Local	2013	2013	2011
70.292	Grey Scalloped Bar	<i>Dyscia fagaria</i>	14-May	16-Aug	Scarce	2003	1988	1996
70.295	Grass Wave	<i>Perconia strigillaria</i>	03-Jun	07-Aug	Scarce	2012	2012	2013

ABH	Vernacular	Scientific	Earliest	Latest	Status	VC72	VC73	VC74
70.297	Grass Emerald	<i>Pseudoterpna pruinata atropunctaria</i>	08-Jun	20-Aug	Common	2013	2013	2012
70.299	Large Emerald	<i>Geometra papilionaria</i>	18-Jun	25-Aug	Common	2013	2013	2012
70.303	Little Emerald	<i>Jodis lactearia</i>	19-May	09-Jul	Local	2010	2013	2006
70.305	Common Emerald	<i>Hemithea aestivaria</i>	29-Jun	07-Aug	Local	2013	2013	2011
71.003	Puss Moth	<i>Cerura vinula</i>	15-Apr	30-Jun	Local	2012	2012	2011
71.005	Sallow Kitten	<i>Furcula furcula</i>	15-May	26-Jul	Scarce	2013	2013	2012
71.010	Marbled Brown	<i>Drymonia dodonaea</i>	08-May	04-Jul	Local	2013	2013	2006
71.011	Lunar Marbled Brown	<i>Drymonia ruficomis</i>	09-Apr	06-Jun	Local	2013	2013	2011
71.012	Iron Prominent	<i>Notodonta dromedarius</i>	05-May	05-Sep	Local	2013	2013	2011
71.013	Pebble Prominent	<i>Notodonta ziczac</i>	17-Apr	02-Sep	Common	2013	2013	2013
71.016	Great Prominent	<i>Peridea anceps</i>	19-Apr	10-Jun	Local		2013	
71.017	Swallow Prominent	<i>Pheosia tremula</i>	30-May	11-Sep	Local	2013	2013	2011
71.018	Lesser Swallow Prominent	<i>Pheosia gnoma</i>	21-Apr	08-Sep	Common	2013	2013	2013
71.020	Pale Prominent	<i>Pterostoma palpina</i>	21-Apr - 04-Jul	13-Jul - 30-Aug	Common	2013	2013	2013
71.021	Coxcomb Prominent	<i>Ptilodon capucina</i>	07-May	01-Oct	Common	2013	2013	2013
71.023	Scarce Prominent	<i>Odontosia carmelita</i>	13-Apr	20-May	Scarce	2013	2012	2002
71.025	Buff-tip	<i>Phalera bucephala</i>	25-Apr	07-Aug	Common	2013	2013	2012
71.028	Small Chocolate-tip	<i>Clostera pigra</i>	09-May	28-May	Rare	1862	1972	2005
72.001	The Herald	<i>Scoliopteryx libatrix</i>	11-Jul - 02-Jan	03-Apr - 02-Jul	Common	2013	2013	2013
72.002	Straw Dot	<i>Rivula sericealis</i>	17-Jun	10-Oct	Common	2013	2013	2013
72.003	The Snout	<i>Hypena proboscidalis</i>	03-Jun	22-Oct	Common	2013	2013	2013
72.009	White Satin Moth	<i>Leucoma salicis</i>	23-Jul	23-Jul	Rare		1996	
72.013	Yellow-tail	<i>Euproctis similis</i>	20-Jun	15-Sep	Common	2013	2013	2013
72.016	Dark Tussock	<i>Dicallomera fascelina</i>	02-Jun	17-Aug	Scarce	2013	2007	2013
72.017	The Vapourer	<i>Orgyia antiqua</i>	09-Aug	14-Oct	Scarce	2006	2012	2009
72.019	Buff Ermine	<i>Spilosoma lutea</i>	06-May	10-Aug	Common	2013	2013	2013
72.020	White Ermine	<i>Spilosoma lubricipeda</i>	19-Apr - 05-Aug	23-Aug - 03-Oct	Common	2013	2013	2013
72.023	Clouded Buff	<i>Diacrisia sannio</i>	31-May	27-Jul	Local	2013	2013	2012
72.024	Ruby Tiger	<i>Phragmatobia fuliginosa fuliginosa</i>	10-Apr - 26-Jun	01-Jul - 09-Sep	Common	2013	2013	2013
72.025	Wood Tiger	<i>Parasemia plantaginis plantaginis</i>	06-Jun	19-Jul	Scarce	2011	2011	2004
72.026	Garden Tiger	<i>Arctia caja</i>	14-Jun	28-Aug	Common	2013	2013	2013
72.029	Scarlet Tiger	<i>Callimorpha dominula</i>			Adventive		1997	
72.031	The Cinnabar	<i>Tyria jacobaeae</i>	24-Apr	18-Aug	Common	2013	2013	2013
72.034	Crimson Speckled	<i>Utetheisa pulchella</i>			Migrant		1961	
72.036	Muslin Footman	<i>Nudaria mundana</i>	08-Jun	15-Aug	Local	2013	2013	2013
72.037	Round-winged Muslin	<i>Thumatha senex</i>	20-Jun	04-Aug	Rare	2009	2012	2008
72.038	Four-dotted Footman	<i>Cybosia mesomella</i>	31-May	17-Aug	Local	2013	2013	2012
72.042	Red-necked Footman	<i>Atolmis rubricollis</i>	26-May	21-Jul	Common	2013	2012	2011
72.043	Buff Footman	<i>Eilema depressa</i>	02-Jul	09-Sep	Local	2013	2013	2011
72.044	Dingy Footman	<i>Eilema griseola</i>	01-Aug	09-Sep	Rare	2013		
72.045	Common Footman	<i>Eilema lurideola</i>	17-Jun	08-Sep	Common	2013	2013	2013
72.046	Scarce Footman	<i>Eilema complana</i>	28-Jun	08-Sep	Local	2010	2012	2013
72.053	The Fan-foot	<i>Herminia tarsipennalis</i>	10-Jun - 28-Aug	01-Oct	Common	2013	2013	2011
72.055	Small Fan-foot	<i>Herminia grisealis</i>	18-May	24-Aug	Common	2013	2013	2013
72.060	Marsh Oblique-barred	<i>Hypenodes humidalis</i>	27-Jun	07-Sep	Scarce	2013	2013	1999
72.061	Pinion-streaked Snout	<i>Schrankia costaestrigalis</i>	27-Jun	13-Oct	Local	2013	2013	2012
72.067	Small Purple-barred	<i>Phytometra viridaria</i>	01-May	11-Jul	Scarce	2000	2008	2003
72.073	Small Marbled	<i>Eublemma parva</i>	20-Jun	10-Jul	Migrant	1982		1998
72.078	Red Underwing	<i>Catocala nupta</i>	22-Aug	29-Sep	Rare	2005	2006	
72.083	Burnet Companion	<i>Euclidia glyphica</i>	31-May	09-Jul	Scarce	1974	2008	
72.084	Mother Shipton	<i>Euclidia mi</i>	25-Apr	15-Jul	Local	2008	2011	2012
73.001	The Spectacle	<i>Abrostola tripartita</i>	06-May	01-Sep	Common	2013	2013	2013
73.002	Dark Spectacle	<i>Abrostola triplasia</i>	19-May	15-Aug	Local	2013	2013	2010
73.012	Burnished Brass	<i>Diachrysis chrysitis</i>	11-Jun	15-Sep	Common	2013	2013	2013

ABH	Vernacular	Scientific	Earliest	Latest	Status	VC72	VC73	VC74
73.014	Golden Plusia	<i>Polychrysis moneta</i>	12-Jul - 31-Jul	20-Oct	Rare	1996		
73.015	Silver Y	<i>Autographa gamma</i>	28-Apr	10-Dec	Migrant	2013	2013	2013
73.016	Beautiful Golden Y	<i>Autographa pulchrina</i>	30-May	29-Sep	Common	2013	2013	2013
73.017	Plain Golden Y	<i>Autographa jota</i>	06-Jun	04-Sep	Common	2013	2013	2012
73.018	Gold Spangle	<i>Autographa bractea</i>	25-Jun	17-Aug	Common	2013	2013	2012
73.021	Scarce Silver Y	<i>Syngrapha interrogationis</i>	29-Jun	19-Aug	Scarce	2012	2005	1976
73.022	Gold Spot	<i>Plusia festucae</i>	29-May	01-Oct	Common	2013	2013	2012
73.023	Lempke's Gold Spot	<i>Plusia putnami gracilis</i>	21-Jun	03-Sep	Local	2013	2013	2012
73.026	Silver Hook	<i>Deltote uncula</i>	15-May	08-Aug	Local	2013	2013	2012
73.032	Nut-tree Tussock	<i>Colocasia coryli</i>	03-Apr	15-Aug	Common	2013	2013	2013
73.033	Figure of Eight	<i>Diloba caeruleocephala</i>	19-Sep	27-Oct	Local	2000	2009	
73.036	Alder Moth	<i>Acronicta alni</i>	15-May	07-Jul	Scarce	2011	2013	2012
73.038	Grey Dagger	<i>Acronicta psi</i> *	13-May	08-Sep	Local	1982	2013	2011
73.040	The Miller	<i>Acronicta leporina</i>	28-May	22-Sep	Scarce	2013	2010	1991
73.042	Light Knot Grass	<i>Acronicta menyanthidis menyanthidis</i>	08-May	13-Jul	Scarce	2012	2012	2008
73.045	Knot Grass	<i>Acronicta rumicis</i>	13-May	16-Aug	Common	2013	2013	2013
73.046	Poplar Grey	<i>Subacronicta megacephala</i>	24-May	25-Jul	Rare	2012	2011	
73.047	The Coronet	<i>Craniophora ligustri</i>	19-May	10-Aug	Local	2013	2013	2006
73.048	Small Yellow Underwing	<i>Panemeria tenebrata</i>	01-Jun	01-Jun	Rare		1941	
73.052	The Shark	<i>Cucullia umbratica</i>	23-May	15-Aug	Local	2012	2011	2012
73.053	Chamomile Shark	<i>Cucullia chamomillae</i>	21-Apr	27-May	Rare	2011	2011	2011
73.061	The Anomalous	<i>Stilbia anomala</i>	19-Jul	30-Sep	Local	2013	2012	2012
73.062	Copper Underwing	<i>Amphipyra pyramidea</i>	28-Jul	08-Oct	Local	2013	2013	2013
73.063	Svensson's Copper Underwing	<i>Amphipyra berbera svenssoni</i>	13-Aug	24-Sep	Rare	2013	2006	
73.064	Mouse Moth	<i>Amphipyra tragopoginis</i>	05-Jul	13-Oct	Common	2013	2013	2011
73.068	Green-brindled Crescent	<i>Allophyes oxyacanthae</i>	03-Sep	05-Nov	Common	2013	2013	2013
73.069	Early Grey	<i>Xylocampa areola</i>	03-Jan	21-May	Common	2013	2013	2012
73.070	Bordered Sallow	<i>Pyrhia umbra</i>	22-Jun	05-Aug	Rare	2011	2011	1899
73.074	Bordered Straw	<i>Heliothis peltigera</i>	18-Jun	24-Jun	Migrant	2006	2009	
73.076	Scarce Bordered Straw	<i>Helicoverpa armigera</i>	06-Aug	30-Oct	Migrant	2006	2003	2006
73.084	Marbled Beauty	<i>Bryophila domestica</i>	27-Jun	25-Aug	Local	2013	2013	2009
73.087	Small Mottled Willow	<i>Spodoptera exigua</i>	11-Jun	03-Sep	Scarce	2006	2011	2011
73.092	Mottled Rustic	<i>Caradrina morpheus</i>	01-Jun	13-Aug	Local	2013	2013	2011
73.095	Pale Mottled Willow	<i>Caradrina clavipalpis</i>	01-May - 12-Aug	20-Aug - 30-Oct	Local	2012	2013	1999
73.096	The Uncertain	<i>Hoplodrina octogenaria</i> *	10-Jun	23-Aug	Local	2013	2013	2012
73.097	The Rustic	<i>Hoplodrina blanda</i> *	27-May	18-Aug	Common	2013	2013	2012
73.100	Silky Wainscot	<i>Chilodes maritima</i>	10-Jun	19-Jul	Rare		2013	
73.101	Treble Lines	<i>Charanyca trigrammica</i>	19-May	13-Jul	Rare		2004	
73.102	Brown Rustic	<i>Rusina ferruginea</i>	17-May	15-Aug	Common	2013	2013	2012
73.107	Old Lady	<i>Mormo maura</i>	05-Jul	28-Aug	Scarce	2013	2011	1987
73.109	Straw Underwing	<i>Thalophila matura</i>	07-Jul	22-Aug	Scarce	2002	1999	2006
73.110	The Saxon	<i>Hyppa rectilinea</i>	10-May	11-Jul	Scarce	2013	2013	
73.113	Angle Shades	<i>Phlogophora meticulosa</i>	20-Mar	10-Dec	Common	2013	2013	2013
73.114	Small Angle Shades	<i>Euplexia lucipara</i>	12-May - 19-Aug	06-Sep - 15-Sep	Common	2013	2013	2013
73.118	Haworth's Minor	<i>Celaena haworthii</i>	24-Jul	27-Sep	Local	2013	2013	2013
73.119	The Crescent	<i>Helotropha leucostigma leucostigma</i>	13-Jul	08-Oct	Local	2013	2013	2011
73.121	Frosted Orange	<i>Gortyna flavago</i>	09-Aug	17-Oct	Common	2013	2013	2013
73.123	Rosy Rustic	<i>Hydraecia micacea</i>	10-Jul	27-Oct	Common	2013	2013	2013
73.124	The Butterbur	<i>Hydraecia petasitis</i>	15-Aug	18-Aug	Rare		1998	2009
73.127	Large Ear	<i>Amphipoea lucens</i> *	21-Jul	24-Sep	Local	2013	2013	2013
73.128	Ear Moth	<i>Amphipoea oculea</i> *	09-Aug	15-Oct	Local	2003	2013	1976
73.129	Crinan Ear	<i>Amphipoea crinanensis</i> *	10-Aug	02-Oct	Local	2010	1970	2013
73.131	Flounced Rustic	<i>Luperina testacea</i>	19-Jul	12-Oct	Common	2013	2013	2013
73.134	Large Wainscot	<i>Rhizodra lutosa</i>	15-Aug	26-Oct	Local	2013	2013	2011
73.136	Bulrush Wainscot	<i>Nonagria typhae</i>	17-Jul	14-Oct	Scarce	2013	2011	2008
73.137	Fen Wainscot	<i>Arenostola phragmitidis</i>	15-Jul	24-Aug	Rare		2013	

ABH	Vernacular	Scientific	Earliest	Latest	Status	VC72	VC73	VC74
73.142	Small Rufous	<i>Coenobia rufa</i>	31-Jul	31-Jul	Rare		2011	
73.144	Small Wainscot	<i>Denticucullus pygmina</i>	05-Jul	15-Oct	Common	2013	2013	2013
73.147	Small Dotted Buff	<i>Photedes minima</i>	25-May	23-Aug	Common	2013	2013	2013
73.154	Dusky Brocade	<i>Apamea remissa</i>	16-May	18-Aug	Common	2013	2013	2012
73.155	Clouded Brindle	<i>Apamea epomidion</i>	28-May	14-Aug	Scarce	2012	1998	1897
73.156	Clouded-bordered Brindle	<i>Apamea crenata</i>	17-May	21-Aug	Common	2013	2013	2013
73.158	Rustic Shoulder-knot	<i>Apamea sordens</i>	13-May	07-Aug	Local	2013	2013	1998
73.159	Small Clouded Brindle	<i>Apamea unanimitis</i>	29-May	12-Aug	Local	2013	2012	2011
73.160	Slender Brindle	<i>Apamea scolopacina</i>	02-Jul	18-Aug	Local	2013	2013	2006
73.162	Dark Arches	<i>Apamea monoglypha</i>	24-May	27-Oct	Common	2013	2013	2013
73.163	Light Arches	<i>Apamea lithoxyloa</i>	18-Jun	22-Aug	Common	2013	2013	2012
73.165	The Confused	<i>Apamea furva britannica</i>	18-Jun	12-Aug	Scarce	2003	2011	2012
73.167	Northern Arches or Exile	<i>Apamea exulis</i>	09-Jul	13-Aug	Rare	2005	2012	
73.168	Double Lobed	<i>Lateroligia ophiogramma</i>	03-Jul	01-Sep	Local	2013	2013	2012
73.169	Common Rustic	<i>Mesapamea secalis*</i>	01-Jul	10-Sep	Common	2011	2011	2012
73.170	Lesser Common Rustic	<i>Mesapamea didyma*</i>	22-Jul	03-Sep	Local	2011	1997	2011
73.171	Rosy Minor	<i>Litoligia literosa</i>	25-Jun	07-Sep	Common	2013	2013	2013
73.172	Cloaked Minor	<i>Mesoligia furuncula</i>	26-Jun	26-Aug	Local	2011	2013	2010
73.173	Marbled Minor	<i>Oligia strigilis*</i>	31-May	07-Aug	Common	2012	2011	2011
73.174	Tawny Marbled Minor	<i>Oligia latruncula*</i>	29-May	15-Aug	Local	2011	1998	1997
73.175	Rufous Minor	<i>Oligia versicolor*</i>	02-Jun	28-Aug	Local	2013	2013	2011
73.176	Middle-barred Minor	<i>Oligia fasciuncula</i>	03-Jun	13-Aug	Common	2013	2013	2013
73.179	Orange Sallow	<i>Tiliacea citrigo</i>	16-Aug	07-Oct	Scarce	2013	2013	2009
73.181	Pink-barred Sallow	<i>Xanthia togata</i>	20-Aug	23-Oct	Common	2013	2013	2013
73.182	The Sallow	<i>Cirrhia icteritia</i>	04-Aug	18-Oct	Common	2013	2013	2013
73.183	Dusky-lemon Sallow	<i>Cirrhia gilvago</i>	16-Aug	17-Oct	Local	2000	2006	2009
73.187	Brown-spot Pinion	<i>Agrochola litura</i>	11-Aug	22-Oct	Local	2013	2011	1909
73.188	Flounced Chestnut	<i>Agrochola helvola</i>	24-Aug	06-Oct	Scarce	1970	2012	2003
73.189	Red-line Quaker	<i>Agrochola lota</i>	05-Sep	17-Nov	Common	2013	2013	2013
73.190	Yellow-line Quaker	<i>Agrochola macilentata</i>	09-Sep	28-Nov	Common	2013	2013	2013
73.192	The Brick	<i>Agrochola circellaris</i>	11-Aug	29-Nov	Common	2013	2013	2013
73.193	Lunar Underwing	<i>Omphaloscelis lunosa</i>	22-Jul	24-Oct	Local	2013	2013	2013
73.194	The Chestnut	<i>Conistra vaccinii</i>	07-Sep	02-Jun	Common	2013	2013	2013
73.195	Dark Chestnut	<i>Conistra ligula</i>	19-Sep	24-Mar	Local	2013	2013	
73.200	Tawny Pinion	<i>Lithophane semibrunnea</i>	29-Oct	02-May	Rare	2009	2011	
73.201	Pale Pinion	<i>Lithophane socia</i>	19-Sep - 10-Nov	16-Mar - 03-Jun	Scarce	2013	2012	2011
73.206	Blair's Shoulder-knot or Stone Pinion	<i>Lithophane leautieri hesperica</i>	24-Sep	23-Oct	Rare	2011	2012	
73.207	Golden-rod Brindle	<i>Xylena solidaginis</i>	04-Aug	03-Sep	Scarce	2010	2005	1910
73.208	Sword-grass	<i>Xylena exsoleta</i>	11-Sep - 30-Oct	24-Feb - 08-May	Scarce	2001	2011	1961
73.209	Red Sword-grass	<i>Xylena vetusta</i>	19-Sep - 08-Dec	03-Feb - 31-May	Local	2013	2013	2013
73.210	The Satellite	<i>Eupsilia transversa</i>	11-Sep	02-May	Common	2013	2013	2012
73.213	The Olive	<i>Ipimorpha subtusa</i>	02-Aug	24-Aug	Rare	2013	2012	
73.216	The Dun-bar	<i>Cosmia trapezina</i>	25-Jun	23-Sep	Common	2013	2013	2012
73.219	Centre-barred Sallow	<i>Atethmia centrigo</i>	21-Jul	06-Oct	Local	2013	2013	2013
73.220	Minor Shoulder-knot	<i>Brachylomia viminalis</i>	03-Jul	07-Sep	Common	2013	2011	1997
73.221	The Suspected	<i>Parastichtis suspecta</i>	08-Jul	07-Sep	Scarce	2011	2011	1999
73.222	Dingy Shears	<i>Apterogenum ypsilon</i>	11-Jul	06-Aug	Rare	2013	2012	
73.224	Merveille du Jour	<i>Griposia aprilina</i>	11-Sep	01-Nov	Local	2013	2013	2013
73.225	Brindled Green	<i>Dryobotodes eremita</i>	10-Aug	30-Sep	Local	2013	2013	1895
73.228	Grey Chi	<i>Antitype chi</i>	05-Aug	20-Sep	Local	2013	2013	2011
73.232	Northern Deep-brown Dart	<i>Aporophyla lueneburgensis</i>	27-Jul	29-Sep	Scarce	1976	2008	2009
73.233	Black Rustic	<i>Aporophyla nigra</i>	20-Aug	22-Oct	Local	2013	2013	2013
73.234	Brindled Ochre	<i>Dasypolia templi</i>	19-Sep - 12-Oct	30-Mar - 04-Apr	Rare	2013	2012	2011
73.235	Feathered Ranunculus	<i>Polymixis lichenea lichenea</i>	01-Sep	20-Oct	Scarce	2011	2012	2013
73.238	Dark Brocade	<i>Mniotype adusta</i>	12-May	07-Aug	Local	2013	2013	2013
73.241	Pine Beauty	<i>Panolis flammea</i>	21-Mar	23-May	Scarce	2012	2011	2011



ABH	Vernacular	Scientific	Earliest	Latest	Status	VC72	VC73	VC74
73.242	Clouded Drab	<i>Orthosia incerta</i>	28-Feb	05-Jun	Common	2013	2013	2013
73.244	Common Quaker	<i>Orthosia cerasi</i>	02-Mar	07-Jun	Common	2013	2013	2013
73.245	Small Quaker	<i>Orthosia cruda</i>	19-Feb	19-May	Common	2013	2013	2012
73.247	Powdered Quaker	<i>Orthosia gracilis</i>	04-Apr	04-Jun	Common	2013	2013	2011
73.249	Hebrew Character	<i>Orthosia gothica</i>	10-Feb	09-Jun	Common	2013	2013	2013
73.250	Twin-spotted Quaker	<i>Anorthoa munda</i>	17-Mar	19-May	Common	2013	2013	2012
73.252	Hedge Rustic	<i>Tholera cespitis</i>	10-Aug	17-Sep	Local	2011	2013	2013
73.253	Feathered Gothic	<i>Tholera decimalis</i>	10-Aug	28-Sep	Local	2013	2013	2013
73.254	Antler Moth	<i>Cerapteryx graminis</i>	23-Jun	30-Sep	Common	2013	2013	2013
73.255	The Nutmeg	<i>Anarta trifolii</i>	22-Jun	20-Aug	Rare		2013	1904
73.256	Broad-bordered White Underwing	<i>Anarta melanopa</i>	04-Jun	06-Jun	Rare	1998	1978	
73.257	Beautiful Yellow Underwing	<i>Anarta myrtilli</i>	08-May	02-Aug	Scarce	2012	2012	2013
73.261	Grey Arches	<i>Polia nebulosa</i>	07-Jun	14-Aug	Local	2012	2013	2012
73.264	Pale-shouldered Brocade	<i>Lacanobia thalassina</i>	22-Apr	25-Jul	Common	2013	2013	2012
73.265	Beautiful Brocade	<i>Lacanobia contigua</i>	10-May	10-Jul	Scarce	2012	2011	
73.266	Dog's Tooth	<i>Lacanobia suasa</i>	07-May	11-Aug	Local	2013	2013	2007
73.267	Bright-line Brown-eye	<i>Lacanobia oleracea</i>	07-May	15-Sep	Common	2013	2013	2013
73.270	Dot Moth	<i>Melanchnra persicariae</i>	11-Jun	02-Sep	Local	2013	2013	1903
73.271	Broom Moth	<i>Ceramica pisi</i>	13-May	09-Aug	Common	2013	2013	2013
73.272	Glaucous Shears	<i>Papestra biren</i>	05-May	17-Jul	Scarce	2012	2013	2000
73.273	The Shears	<i>Hada plebeja</i>	21-May	24-Jul	Local	2013	2013	2012
73.274	Cabbage Moth	<i>Mamestra brassicae</i>	07-May	23-Aug	Local	2013	2012	2010
73.275	White Colon	<i>Sideridis turbida</i>	12-Jun	20-Jun	Rare			1906
73.276	The Champion	<i>Sideridis rivularis</i>	11-May	06-Aug	Local	2013	2013	2011
73.279	Broad-barred White	<i>Hecatera bicolorata</i>	06-May - 06-Jul	31-Jul - 14-Aug	Scarce	2002	2011	2005
73.281	The Lychnis	<i>Hadena bicruris</i>	04-May	29-Sep	Common	2013	2013	2013
73.283	Marbled Coronet	<i>Hadena confusa</i>	28-Apr	18-Aug	Scarce	2001	2013	2011
73.286	Tawny Shears	<i>Hadena perplexa perplexa</i>	24-Apr	01-Sep	Scarce		2011	2013
73.290	Brown-line Bright-eye	<i>Mythimna conigera</i>	29-May	28-Aug	Common	2013	2013	2011
73.291	Common Wainscot	<i>Mythimna pallens</i>	09-Jun	05-Oct	Common	2013	2013	2012
73.293	Smoky Wainscot	<i>Mythimna impura</i>	03-Jun	12-Oct	Common	2013	2013	2013
73.294	Southern Wainscot	<i>Mythimna straminea</i>	25-Jun	04-Sep	Rare	2013	2013	
73.295	The Delicate	<i>Mythimna vitellina</i>	11-Aug	04-Oct	Migrant	2006	2006	2006
73.296	White-speck	<i>Mythimna unipuncta</i>	01-Aug	05-Nov	Migrant	2000	2002	2000
73.298	The Clay	<i>Mythimna ferrago</i>	17-Jun	30-Aug	Common	2013	2013	2013
73.299	Shore Wainscot	<i>Mythimna litoralis</i>	23-Jun	26-Jul	Rare		2011	1984
73.301	Shoulder-striped Wainscot	<i>Leucania comma</i>	23-May	12-Aug	Local	2013	2013	2011
73.302	Obscure Wainscot	<i>Leucania obsoleta</i>	23-May	26-Jun	Rare		2012	
73.304	The Cosmopolitan	<i>Leucania loreyi</i>	01-Oct	01-Oct	Rare	2006		
73.307	Pearly Underwing	<i>Peridroma saucia</i>	11-Sep	06-Nov	Migrant	2011	2006	2006
73.308	Portland Moth	<i>Actebia praecox</i>	26-Jul	31-Aug	Rare			1987
73.311	Coast Dart	<i>Euxoa cursoria</i>	26-Jul	04-Sep	Rare		2010	1997
73.312	Square-spot Dart	<i>Euxoa obelisca grisea</i>	26-Jul	01-Sep	Rare		2006	2011
73.313	White-line Dart	<i>Euxoa tritici</i>	17-Jul	18-Sep	Local	2013	2013	2011
73.314	Garden Dart	<i>Euxoa nigricans</i>	05-Jul	30-Sep	Local	2012	2013	2009
73.317	Heart and Dart	<i>Agrotis exclamationis</i>	07-May	15-Sep	Common	2013	2013	2013
73.319	Turnip Moth	<i>Agrotis segetum</i>	25-May - 25-Jul	04-Aug - 04-Nov	Local	2011	2012	2006
73.320	Heart and Club	<i>Agrotis clavis</i>	30-Jul	30-Jul	Rare	1862	1870	1972
73.322	Archer's Dart	<i>Agrotis vestigialis</i>	07-Jul	02-Sep	Rare		1996	2011
73.323	Sand Dart	<i>Agrotis ripae</i>	15-Jul	15-Jul	Rare			1987
73.324	Crescent Dart	<i>Agrotis trux lunigera</i>	11-Jul - 03-Aug	21-Sep	Scarce	2006	2002	2011
73.325	Shuttle-shaped Dart	<i>Agrotis puta puta</i>	11-Jun	13-Jul	Rare		2012	1977
73.327	Dark Sword-grass	<i>Agrotis ipsilon</i>	25-Mar	23-Nov	Migrant	2013	2013	2013
73.328	The Flame	<i>Axylia putris</i>	07-May - 24-Aug	15-Sep - 02-Oct	Common	2013	2013	2013
73.329	Flame Shoulder	<i>Ochropleura plecta</i>	18-Apr	28-Sep	Common	2013	2013	2013
73.331	Barred Chestnut	<i>Diarsia dahlii</i>	08-Jul	27-Sep	Local	2013	2013	2013
73.332	Purple Clay	<i>Diarsia brunnea</i>	07-Jun	11-Sep	Common	2013	2013	2013

ABH	Vernacular	Scientific	Earliest	Latest	Status	VC72	VC73	VC74
73.333	Ingrailed Clay	<i>Diarsia mendica mendica</i>	03-Jun	31-Aug	Common	2013	2013	2013
73.334	Small Square-spot	<i>Diarsia rubi</i> *	01-May	15-Oct	Common	2013	2013	2013
73.336	Red Chestnut	<i>Cerastis rubricosa</i>	01-Feb	27-May	Common	2013	2013	2013
73.338	True Lover's Knot	<i>Lycophotia porphyrea</i>	03-Jun	11-Sep	Common	2013	2013	2013
73.339	Dotted Rustic	<i>Rhyacia simulans</i>	06-Aug	06-Aug	Rare		2004	
73.341	Northern Rustic	<i>Standfussiana lucerneae</i>	08-Jul	19-Sep	Scarce	2010	2004	2012
73.342	Large Yellow Underwing	<i>Noctua pronuba</i>	08-Jun	06-Nov	Common	2013	2013	2013
73.343	Broad-bordered Yellow Underwing	<i>Noctua fimbriata</i>	04-Jul	24-Sep	Common	2013	2013	2012
73.345	Lesser Yellow Underwing	<i>Noctua comes</i>	16-Jun	30-Oct	Common	2013	2013	2013
73.346	Least Yellow Underwing	<i>Noctua interjecta caliginosa</i>	17-Jul	02-Sep	Local	2013	2013	2013
73.348	Lesser Broad-bordered Yellow Underwing	<i>Noctua janthe</i>	13-Jul	30-Sep	Common	2013	2013	2013
73.350	Great Brocade	<i>Eurois occulta</i>	10-Jul	24-Aug	Scarce	2012	2011	1910
73.351	Double Dart	<i>Graphiphora augur</i>	24-Jun	08-Aug	Common	2013	2013	2012
73.352	Green Arches	<i>Anaplectoides prasina</i>	06-Jun	21-Aug	Common	2013	2013	2011
73.353	Dotted Clay	<i>Xestia baja</i>	27-Jun	16-Sep	Common	2013	2013	2013
73.355	Neglected Rustic	<i>Xestia castanea</i>	06-Aug	27-Sep	Local	2013	2013	2011
73.356	Heath Rustic	<i>Xestia agathina agathina</i>	16-Aug	11-Sep	Scarce	2013	2013	2012
73.357	Square-spot Rustic	<i>Xestia xanthographa</i>	05-Jul	30-Sep	Common	2013	2013	2013
73.358	Six-striped Rustic	<i>Xestia sexstrigata</i>	23-Jun	01-Sep	Common	2013	2013	2013
73.359	Setaceous Hebrew Character	<i>Xestia c-nigrum</i>	03-Jun	08-Nov	Common	2013	2013	2013
73.360	Triple-spotted Clay	<i>Xestia ditrapezium</i>	10-Jun	24-Aug	Local	2013	2013	2013
73.361	Double Square-spot	<i>Xestia triangulum</i>	11-Jun	29-Aug	Common	2013	2013	2013
73.365	Autumnal Rustic	<i>Eugnorisma glareosa</i>	01-Aug	30-Oct	Common	2013	2013	2013
73.368	The Gothic	<i>Naenia typica</i>	30-Jun	01-Sep	Local	2013	2013	2012
74.004	Least Black Arches	<i>Nola confusalis</i>	20-Apr	29-Jun	Local	2013	2013	2013
74.008	Green Silver-lines	<i>Pseudopsis prasinana britannica</i>	19-May	22-Jul	Local	2013	2013	2011
74.009	Oak Nycteoline	<i>Nycteola revayana</i>	07-Aug	05-May	Rare	1952	2013	1912

The following macro moth subspecies have been recorded:

ABH	Vernacular	Taxon
3.005.1	Ghost Moth	<i>Hepialus humuli thulensis</i>
65.005.1	Pebble Hook-tip	<i>Drepana falcataria scotica</i>
72.024	Ruby Tiger	<i>Phragmatobia fuliginosa borealis</i>
73.286.1	Pod Lover	<i>Hadena perplexa capsophila</i>

The following macro moth forms have been recorded:

ABH	Vernacular	Taxon	Form
3.003.1	Map-winged Swift	<i>Korscheltellus fusconebulosa</i>	<i>gallicus</i>
65.013	Common Lutestring	<i>Ochropacha duplaris</i>	<i>obscura</i>
66.010	The Drinker	<i>Euthrix potatoria</i>	<i>pallida</i>
70.027	Cream Wave	<i>Scopula floslactata floslactata</i>	<i>scotica</i>
70.016	Riband Wave	<i>Idaea aversata</i>	<i>remutata</i>
70.049	Garden Carpet	<i>Xanthorhoe fluctuata fluctuata</i>	<i>thules</i>
70.084	Blue-bordered Carpet	<i>Plemyria rubiginata plumbata</i>	<i>semifumosa</i>
70.103	Water Carpet	<i>Lampropteryx suffumata</i>	<i>piceata</i>
70.094	Small Phoenix	<i>Ecliptopera silaceata</i>	<i>insulata</i>
70.169	Ash Pug	<i>Eupithecia innotata</i>	<i>fraxinata</i>
70.177	Satyr Pug	<i>Eupithecia satyrata satyrata</i>	<i>callunaria</i>
70.179	Wormwood Pug	<i>Eupithecia absinthiata</i>	<i>goossensiata</i>
70.187	Tawny Speckled Pug	<i>Eupithecia icterata</i>	<i>cognata</i>
70.144	Green Pug	<i>Pasiphila rectangulata</i>	<i>anthrax</i>
70.214	Tawny-barred Angle	<i>Macaria liturata</i>	<i>nigrofulvata</i>
70.240	Scalloped Hazel	<i>Odontopera bidentata</i>	<i>nigra</i>
70.241	Scalloped Oak	<i>Crocallis elinguaris</i>	<i>unicolor</i>
70.247	Pale Brindled Beauty	<i>Phigalia pilosaria</i>	<i>monacharia</i>
70.252	Peppered Moth	<i>Biston betularia</i>	<i>carbonaria</i>
70.255	Dotted Border	<i>Agriopsis marginaria</i>	<i>fuscata</i>

ABH	Vernacular	Taxon	Form
70.258	Willow Beauty	<i>Peribatodes rhomboidaria</i>	<i>perfumaria</i>
71.021	Coxcomb Prominent	<i>Ptilodon capucina</i>	<i>nigra</i>
72.044	Dingy Footman	<i>Eilema griseola</i>	<i>stramineola</i>
72.026	Garden Tiger	<i>Arctia caja</i>	<i>petriburgensis</i>
72.020	White Ermine	<i>Spilosoma lubricipeda</i>	<i>godarti</i>
72.046	Scarce Footman	<i>Eilema complana</i>	<i>sericea</i>
73.355	Neglected Rustic	<i>Xestia castanea</i>	<i>neglecta</i>
73.249	Hebrew Character	<i>Orthosia gothica</i>	<i>gothicina</i>
73.069	Early Grey	<i>Xylocampa areola</i>	<i>rosea</i>
73.228	Grey Chi	<i>Antitype chi</i>	<i>olivacea</i>
73.182	The Sallow	<i>Cirrhia icteritia</i>	<i>flavescens</i>
73.045	Knot Grass	<i>Acronicta rumicis</i>	<i>salicis</i>
73.047	The Coronet	<i>Craniophora ligustri</i>	<i>coronula</i>
73.162	Dark Arches	<i>Apamea monoglypha</i>	<i>aethiops</i>
73.156	Clouded-bordered Brindle	<i>Apamea crenata</i>	<i>combusta</i>
73.176	Middle-barred Minor	<i>Oligia fasciuncula</i>	<i>pallida</i>
73.137	Fen Wainscot	<i>Arenostola phragmitidis</i>	<i>rufescens</i>
73.032	Nut-tree Tussock	<i>Colocasia coryli</i>	<i>medionigra</i>
73.012	Burnished Brass	<i>Diachrysis chrysitis</i>	<i>aurea</i>
73.012	Burnished Brass	<i>Diachrysis chrysitis</i>	<i>juncta</i>
73.015	Silver Y	<i>Autographa gamma</i>	<i>gammina</i>
73.015	Silver Y	<i>Autographa gamma</i>	<i>nigricans</i>
73.017	Plain Golden Y	<i>Autographa jota</i>	<i>percontationis</i>
74.009	Oak Nycteoline	<i>Nycteola revayana</i>	<i>rosea</i>



## Micro Moths

ABH	Vernacular	Scientific	Earliest	Latest	Status	VC72	VC73	VC74
1.001	Red-barred Gold	<i>Micropterix tunbergella</i>	17-May	18-May	Local	1980		
1.003	Yellow-barred Gold	<i>Micropterix aureatella</i>	10-May	26-Jun	Local	2011	2012	2012
1.004	White-barred Gold	<i>Micropterix aruncella</i>	24-May	19-Jul	Local	2011	2013	2011
1.005	Plain Gold	<i>Micropterix calthella</i>	17-May	09-Jul	Local	2012	2013	2012
2.001	Common Oak Purple	<i>Dyseriocrania subpurpurella</i>	03-Apr	07-Jun	Common	2013	2011	2000
2.003	White-spot Purple	<i>Eriocrania unimaculella</i>			Rare			2011
2.004	Mottled Purple	<i>Eriocrania sparmannella</i>	21-May	21-May	Local		2005	
2.005	Small Birch Purple	<i>Eriocrania salopiella</i>	25-Jun	25-Jun	Local	1950	2005	
2.007	Early Purple	<i>Eriocrania semipurpurella</i>			Rare		2012	
2.008	Large Birch Purple	<i>Eriocrania sangii*</i>			Rare			2011
4.001	Sorrel Pigmy	<i>Enteucha acetosae</i>			Rare		1981	
4.002	Drab Birch Pigmy	<i>Stigmella lapponica</i>	18-May	18-May	Local	2002	2008	1988
4.003	Pale Birch Pigmy	<i>Stigmella confusella</i>			Local	1975	1975	1975
4.005	Common Birch Pigmy	<i>Stigmella betulicola</i>			Local	1975		1975
4.007	Short-barred Pigmy	<i>Stigmella luteella</i>	19-Jun	19-Jun	Local	1961	2000	1961
4.008	White-barred Alder Pigmy	<i>Stigmella glutinosae</i>			Local	1950		1963
4.009	Silver-barred Alder Pigmy	<i>Stigmella alnetella</i>			Rare			2013
4.010	Nut-tree Pigmy	<i>Stigmella microtheriella</i>	06-Oct	06-Oct	Local	1958	1975	2013
4.015	Rosy Leaf Miner	<i>Stigmella anomalella</i>			Local	1975	1975	
4.016	Plain Rose Pigmy	<i>Stigmella spinosissimae</i>			Rare			1994
4.020	Scarce Thorn Pigmy	<i>Stigmella paradoxa</i>			Local	1975	1975	1975
4.023	Common Thorn Pigmy	<i>Stigmella crataegella</i>	14-Jul	14-Jul	Local	1975	1975	1975
4.024	Northern Rowan Pigmy	<i>Stigmella magdalenae</i>			Local	1950	1994	1950
4.025	Common Rowan Pigmy	<i>Stigmella nylandriella</i>	17-Jul	04-Aug	Local	2013	2008	1994
4.026	Common Fruit-tree Pigmy	<i>Stigmella oxyacanthella</i>			Local	1950	2001	2013
4.030	Greenish Thorn Pigmy	<i>Stigmella hybnerella</i>	25-Jun	25-Jun	Local	2004	2013	2013
4.031	Wild-service Pigmy	<i>Stigmella mespilicola</i>			Rare	1974		
4.032	Coarse Hazel Pigmy	<i>Stigmella floslactella</i>	08-May	08-May	Local	2013	2013	1961
4.034	Small Beech Pigmy	<i>Stigmella tityrella</i>	14-Jul	17-Jul	Local	2007	1994	1994
4.035	Sallow Pigmy	<i>Stigmella salicis</i>		12-Aug	Local	2012	2001	2013
4.036	Bilberry Pigmy	<i>Stigmella myrtillella</i>			Rare	1950		
4.038	Willow Pigmy	<i>Stigmella obliquella</i>			Rare	2012		
4.039	Black-poplar Pigmy	<i>Stigmella trimaculella</i>			Local	1970	1975	
4.041	Barred Rowan Pigmy	<i>Stigmella sorbi</i>	29-Jun	29-Jun	Local	1994	1996	1994
4.042	Scrubland Pigmy	<i>Stigmella plagiolella</i>			Rare			1975
4.043	Red Elm Pigmy	<i>Stigmella lemniscella</i>			Local	1952	1961	2013
4.044	Double-barred Pigmy	<i>Stigmella continuella</i>			Rare	1976		
4.045	Golden Pigmy	<i>Stigmella aurella</i>	26-Jul	27-Jul	Local	2013	2013	2013
4.047	Glossy Bramble Pigmy	<i>Stigmella splendidissimella</i>			Rare	1978		
4.048	Water-avens Pigmy	<i>Stigmella pretiosa</i>			Rare	1990		
4.051	Downland Pigmy	<i>Stigmella poterii</i>			Rare	1950	1950	
4.054	Least Thorn Pigmy	<i>Stigmella perpygmaeella</i>			Rare	1978		
4.055	Beech Pigmy	<i>Stigmella hemargyrella</i>	18-May	18-May	Local	2002	2008	2013
4.058	Base-spotted Pigmy	<i>Stigmella basiguttella</i>			Rare	1977		
4.059	Orange-headed Pigmy	<i>Stigmella svenssoni*</i>			Rare	1950		
4.060	Red-headed Pigmy	<i>Stigmella ruficapitella</i>			Local	2004	2008	1975
4.061	Black-headed Pigmy	<i>Stigmella atricapitella</i>			Local	1950	2001	
4.063	Common Oak Pigmy	<i>Stigmella roborella</i>			Rare		1975	
4.068	Broom Pigmy	<i>Trifurcula immundella</i>	26-Jul	27-Jul	Local		2011	
4.071	Dusty Apple Pigmy	<i>Bohemannia pulverosella</i>			Local	1961	1961	1961
4.072	Four-spot Pigmy	<i>Bohemannia quadrimaculella</i>			Rare		1982	
4.078	Hypericum Pigmy	<i>Ectoedemia septembrella</i>			Rare	1950		
4.089	White-banded Pigmy	<i>Ectoedemia albifasciella</i>			Rare	2004		2013
4.090	Spotted Black Pigmy	<i>Ectoedemia subbimaculella</i>			Local	1952	1952	
4.095	Pinch-barred Pigmy	<i>Ectoedemia atricollis</i>			Rare	1950		
4.099	Large Birch Pigmy	<i>Ectoedemia occultella</i>			Local	1975	1975	2013
4.100	Broken-barred Pigmy	<i>Ectoedemia minimella</i>			Local	1950	2013	2013
5.001	Sorrel Bent-wing	<i>Opostega salaciella</i>	16-Jun	11-Aug	Local	2013	2012	2012
5.004	Mint Bent-wing	<i>Pseudopostega crepusculella</i>	24-Jun	06-Aug	Local		2013	



ABH	Vernacular	Scientific	Earliest	Latest	Status	VC72	VC73	VC74
6.003	Oak Satin Lift	<i>Heliozela sericiella</i>			Local	1950	1975	
6.004	Alder Lift	<i>Heliozela resplendella</i>			Local	1978	1950	2013
6.005	Birch Lift	<i>Heliozela hammoniella</i>			Local	1978	2012	1975
7.001	Yellow-barred Long-horn	<i>Nemophora degeerella</i>	29-May	22-Jul	Common	2012	2013	
7.005	Small Long-horn	<i>Nemophora minimella</i>	26-Jun	19-Jul	Rare		2013	
7.006	Green Long-horn	<i>Adela reaumurella</i>	16-Apr	22-Jul	Common	2011	2013	
7.007	Early Long-horn	<i>Adela cuprella</i>			Local	1982	1982	
7.008	Small Barred Long-horn	<i>Adela croesella</i>	13-Jun	20-Jun	Rare	1981		
7.009	Little Long-horn	<i>Cauchas fibulella</i>	21-Jun	25-Jun	Local	1950	2005	
7.010	Meadow Long-horn	<i>Cauchas rufimitrella</i>	29-May	25-Jun	Local		2005	
7.011	Pale Brown Long-horn	<i>Nematopogon pilella</i>	06-Jun	06-Jun	Rare		1878	
7.012	Sandy Long-horn	<i>Nematopogon schwarziellus</i>	22-May	12-Jul	Local	1980	2003	
7.015	Large Long-horn	<i>Nematopogon swammerdamella</i>	28-Apr	23-Jun	Local	2012	2013	2012
8.001	Pale Feathered Bright	<i>Incurvaria pectinea</i>	12-Apr	28-May	Local	1983	2012	2005
8.002	Feathered Bright	<i>Incurvaria masculella</i>	27-Apr	28-May	Local	2012	2012	
8.003	Common Bright	<i>Incurvaria oehlmanniella</i>	06-Jun	06-Jun	Rare		1950	2012
8.004	Strawberry Bright	<i>Incurvaria praelatella</i>	17-Jun	09-Jul	Local	1997	1996	
8.005	Striped Bright	<i>Phylloporia bistrigella</i>	15-Jun	12-Aug	Local	2012	2002	1997
9.002	Wood Bright	<i>Lampronia luzella</i>			Local	1961	1979	
9.003	Raspberry Moth	<i>Lampronia corticella</i>	05-Jul	05-Jul	Local	1950		2011
9.006	Scarce Bright	<i>Lampronia fuscataella</i>			Rare			1977
10.001	Oak Carl	<i>Tischeria ekebladella</i>	21-Jun	27-Jun	Local	1970	2005	1989
10.003	Bordered Carl	<i>Coptotriche marginea</i>	22-Jul	22-Jul	Local	1961	2006	
11.012	Common Sweep	<i>Psyche casta</i>	26-Jun	26-Jun	Local		1961	2005
12.016	Cork Moth	<i>Nemapogon cloacella</i>	08-Mar	20-Jul	Local	2012	2013	2012
12.021	Barred White Clothes	<i>Nemapogon clematella</i>	25-Jun	25-Jun	Rare		2005	
12.026	Common Clothes Moth	<i>Tineola bisselliella</i>	16-Jun	16-Jun	Local	2004	2006	
12.027	Case-bearing Clothes Moth	<i>Tinea pellionella</i>	23-Jun	01-Jul	Local	1988	2002	2006
12.032	Fulvous Clothes	<i>Tinea semifulvella</i>	15-Jun	04-Oct	Local	2013	2005	2013
12.033	Bird's-nest Moth	<i>Tinea trinotella</i>	10-Jun	01-Jul	Local	2006	2007	1961
12.036	Skin Moth	<i>Monopis laevigella</i>	07-May	28-Sep	Local	2013	2013	1983
12.037	Carrion Moth	<i>Monopis weaverella</i>	08-May	22-Aug	Local	2013	2010	2007
14.002	Daisy Bent-wing	<i>Bucculatrix nigricomella</i>	16-Jun	16-Jun	Rare		2002	
14.003	Saltern Bent-wing	<i>Bucculatrix maritima</i>	16-Jun	5-Sep	Local	2013	2010	
14.008	Alder Bent-wing	<i>Bucculatrix cidarella</i>	29-Jun	29-Jun	Rare	2013		
15.004	Pale Red Slender	<i>Caloptilia elongella</i>	09-Jul	17-Jul	Local	2013	2005	2011
15.005	Red Birch Slender	<i>Caloptilia betulicola</i>	25-Jun	23-Apr	Local	2013	2005	2005
15.006	Small Red Slender	<i>Caloptilia rufipennella</i>	19-Jul	20-Jul	Local	1994	1989	
15.008	Yellow-triangle Slender	<i>Caloptilia alchimiella</i>	25-Jun	27-Jul	Local	1979	2010	2006
15.010	White-triangle Slender	<i>Caloptilia stigmatella</i>	26-Aug	04-Sep	Local	2013	2009	2013
15.014	Common Slender	<i>Gracillaria syringella</i>	09-May - 01-Jun	14-Jun - 22-Aug	Common	2013	2013	2013
15.015	Ribwort Slender	<i>Aspilapteryx tringipennella</i>	20-Jun - 05-Jul	05-Aug - 18-Aug	Local	2013	2012	
15.017	Little Slender	<i>Calybites phasianipennella</i>	03-Aug	13-Oct	Rare	2011	1977	
15.022	Garden Apple Slender	<i>Callisto denticulella</i>			Local	1975	1961	1994
15.025	Brown Birch Slender	<i>Paromix betulae</i>	25-Jun	27-Aug	Local	1950	2005	2013
15.028	Hawthorn Slender	<i>Paromix anglicella</i>			Local	1979	2013	2013
15.029	Hazel Slender	<i>Paromix devoniella</i>			Rare	1961		
15.030	Rowan Slender	<i>Paromix scoticella</i>	25-Jun	28-Jun	Local	1961	2005	1988
15.033	Blackthorn Slender	<i>Paromix torquillella</i>	21-Jul	21-Jul	Local	1961		2013
15.034	White Oak Midget	<i>Phyllonorycter harrisella</i>	18-May	22-Jun	Local	1975	2001	1963
15.036	Pale Oak Midget	<i>Phyllonorycter heegeriella</i>			Rare	1952		
15.039	Common Oak Midget	<i>Phyllonorycter quercifoliella</i>	12-May	29-May	Local	1975	1999	
15.040	Garden Midget	<i>Phyllonorycter messaniella</i>	24-Sep	24-Sep	Rare			2013
15.043	Common Thorn Midget	<i>Phyllonorycter oxyacanthae</i>	23-Apr	29-May	Local	2004	2013	2013
15.044	Rowan Midget	<i>Phyllonorycter sorbi</i>	19-Jul	19-Jul	Local	1994	2005	2013
15.046	Brown Apple Midget	<i>Phyllonorycter blancardella</i>	21-Jul	13Aug - 20-Aug	Rare	2013	1952	
15.048	Upland Midget	<i>Phyllonorycter junoniella</i>	28-Sep	28-Sep	Rare	1961	2011	
15.049	Sloe Midget	<i>Phyllonorycter spinicolella</i>	01-Aug	01-Aug	Local	2013	2005	



ABH	Vernacular	Scientific	Earliest	Latest	Status	VC72	VC73	VC74
15.052	Hawthorn Midget	<i>Phyllonorycter corylifoliella</i>			Local	1961	1994	
15.053	Firethorn Leaf Miner	<i>Phyllonorycter leucographella</i>			Rare	2007	2008	
15.054	Willow Midget	<i>Phyllonorycter viminiella</i>			Rare	1952		
15.056	Long-streak Midget	<i>Phyllonorycter salicicolella</i>			Rare		1994	
15.058	Sallow Midget	<i>Phyllonorycter hilarella</i>	17-May	26-Jul - 09-Aug	Local		2005	1997
15.063	Beech Midget	<i>Phyllonorycter maestingella</i>	18-May	03-Aug	Local	2013	1994	2013
15.064	Nut Leaf Blister Moth	<i>Phyllonorycter coryli</i>			Local	2013	2013	
15.067	Common Alder Midget	<i>Phyllonorycter rajella</i>	06-Jul	21-Jul	Local	2004	2004	2013
15.070	Sandhill Midget	<i>Phyllonorycter quinqueguttella</i>			Rare		1982	
15.075	Red Birch Midget	<i>Phyllonorycter ulmifoliella</i>	17-May	17-May	Local	1982	2005	2013
15.076	Large Midget	<i>Phyllonorycter emberizaepenella</i>	22-Jun	22-Jun	Local		2001	1989
15.078	Elm Midget	<i>Phyllonorycter tristrigella</i>			Local	1952	1952	
15.081	Red Hazel Midget	<i>Phyllonorycter nicellii</i>			Rare	2013	2013	2013
15.083	Honeysuckle Midget	<i>Phyllonorycter trifasciella</i>			Rare		1950	
15.086	Sycamore Midget	<i>Phyllonorycter geniculella</i>			Local	1961	1961	2013
16.001	Bird Cherry Ermine	<i>Yponomeuta evonymella</i>	03-Jul	01-Sep	Common	2013	2013	1983
16.002	Orchard Ermine	<i>Yponomeuta padella</i> *	02-Jul	04-Sep	Local	2013	2013	2013
16.004	Spindle Ermine	<i>Yponomeuta cagnagella</i> *	08-Jul	18-Aug	Local	2013	2011	2011
16.010	Brown Ash Ermel	<i>Zelleria hepariella</i>			Rare			2005
16.014	Copper-tipped Ermel	<i>Pseudoswammerdamia combinella</i>	04-Jun	04-Jun	Rare		2013	
16.015	Birch Ermel	<i>Swammerdamia caesiella</i>	19-May	15-Jun	Local	1961	2013	
16.017	Little Ermel	<i>Swammerdamia pyrella</i>	19-Jun	31-Jul	Local		2011	
16.018	Rowan Ermel	<i>Swammerdamia compunctella</i>	24-Jun	29-Jun	Local			2005
16.020	Large Clouded Knot-horn	<i>Paraswammerdamia nebulella</i>	13-Jul	12-Aug	Local	2013	2013	1994
16.022	Brown Pine Ermel	<i>Cedestis subfasciella</i>	25-Jun	25-Jun	Rare		2000	
16.024	Grey Pine Ermel	<i>Ocnerostoma friesei</i>	18-May	28-Jul - 01-Aug	Local	2013		
17.002	Hooked Smudge	<i>Ypsolopha nemorella</i>	31-Jul	10-Aug	Rare		2013	
17.003	Honeysuckle Moth	<i>Ypsolopha dentella</i>	27-Jun	07-Sep	Local	2013	2013	2011
17.010	White-shouldered Smudge	<i>Ypsolopha parenthesella</i>	16-Jul	08-Oct	Local	2013	2013	
17.011	Variable Smudge	<i>Ypsolopha ustella</i>	24-Jul	07-Oct	Local	2013	2013	
17.012	Pied Smudge	<i>Ypsolopha sequella</i>	13-Jul	03-Oct	Local	2013	2011	
17.015	Variable Stem Moth	<i>Ochsenheimeria urella</i>	31-Jul	13-Aug	Local	1981	1999	
18.001	Diamond-back Moth	<i>Plutella xylostella</i>	03-Apr	02-Nov	Migrant	2013	2013	2013
18.003	Grey-streaked Smudge	<i>Plutella porrectella</i>	25-Jun	29-Sep	Rare	2011	2012	
18.004	Rock-cress Smudge	<i>Rhigognostis senilella</i>	07-Sep	07-Sep	Local		2003	
18.005	Coast Smudge	<i>Rhigognostis annulatella</i>	13-Jun	18-Sep	Local			2011
18.006	Scotch Smudge	<i>Rhigognostis incarnatella</i>	03-Jul	24-Apr	Rare		2013	2012
19.001	Reed Smudge	<i>Orthotelia sparganella</i>	11-Jul	22-Jul	Rare	2011	2011	
19.002	Speckled Fanner	<i>Glyphipterix thrasonella</i>	28-May	27-Jul	Common	1996	2013	2011
19.003	Plain Fanner	<i>Glyphipterix fuscoviridella</i>	26-May	05-Jul	Rare	2013	1996	
19.005	Cotton-grass Fanner	<i>Glyphipterix haworthana</i>	28-May	09-Jun	Local	1950	1983	
19.006	Sedge Fanner	<i>Glyphipterix forsterella</i>	29-May	21-Jun	Rare	2012	2012	
19.007	Cocksfoot Moth	<i>Glyphipterix simpliciella</i>	20-May	13-Jul	Local	1984	2013	2009
19.011	Leek Moth	<i>Acrolepiopsis assectella</i>	12-Jul	12-Jul	Rare		2010	
19.014	Bittersweet Smudge	<i>Acrolepia autumnitella</i>	14-Aug	14-Aug	Rare	2013		
20.001	Larch-boring Argent	<i>Argyresthia laevigatella</i>	18-Jun	27-Jul	Local	2013	2010	1961
20.011	Gold-ribbon Argent	<i>Argyresthia brockeella</i>	15-Jun	08-Aug	Common	2012	2013	2012
20.012	Golden Argent	<i>Argyresthia goedartella</i>	16-Jun	07-Sep	Common	2013	2013	2008
20.013	Sallow Argent	<i>Argyresthia pygmaeella</i>	28-Jun	21-Jul	Local	1996	1967	2011
20.015	Brindled Argent	<i>Argyresthia curvella</i>	17-Jul	17-Jul	Rare		2002	
20.016	Netted Argent	<i>Argyresthia retinella</i>	30-Jun	03-Aug	Local	2012	2010	1989
20.017	Oak-bark Argent	<i>Argyresthia glaucinella</i>	25-Jun	25-Jun	Local	1981	2005	
20.018	Blackthorn Argent	<i>Argyresthia spinosella</i>	04-Jun	10-Jul	Local		2005	2011
20.019	Apple Fruit Moth	<i>Argyresthia conjugella</i>	09-Jun	03-Aug	Local	2005	2010	1988
20.020	Brown Rowan Argent	<i>Argyresthia semifusca</i>	30-Jun	30-Jun	Rare		2010	
20.021	Cherry Fruit Moth	<i>Argyresthia pruniella</i>	17-Jun	17-Aug	Local	2013	2013	2013
20.022	Hawthorn Argent	<i>Argyresthia bonnetella</i>	22-Jul	06-Sep	Local	2013	2013	2013
20.023	Purple Argent	<i>Argyresthia albistria</i>	10-Jul	06-Sep	Local	2013	2013	2013
20.024	Large Beech Argent	<i>Argyresthia semitestacella</i>	19-Aug	05-Oct	Rare	2013		2006

ABH	Vernacular	Scientific	Earliest	Latest	Status	VC72	VC73	VC74
21.001	Apple Leaf Miner	<i>Lyonetia clerkella</i>	24-Jun	03-Aug	Local	2013	2011	2013
21.004	Laburnum Leaf Miner	<i>Leucoptera laburnella</i>	01-Aug	01-Aug	Local	2013	1961	
21.005	Broom Bent-wing	<i>Leucoptera spartifoliella</i>	25-Jun	01-Aug	Local	2013	2005	1990
21.008	Pear Leaf Blister Moth	<i>Leucoptera malifoliella</i>			Rare	1961		
22.001	Northern Ermel	<i>Atemelia torquatella</i>			Local	1975	2001	
22.002	Ash Bud Moth	<i>Prays fraxinella</i>	20-Jun	08-Aug	Local	2013	2013	2013
28.004	Northern Tubic	<i>Denisia similella</i>	04-Jul	04-Jul	Rare		2001	
28.009	White-shouldered House-moth	<i>Endrosis sarcitrella</i>	21-Mar	12-Nov	Common	2013	2013	2013
28.010	Brown House Moth	<i>Hofmannophila pseudospretella</i>	04-Mar	24-Sep	Common	2013	2012	2013
28.012	Small Dingy Tubic	<i>Borkhausenia fuscescens</i>	03-Jul	19-Aug	Local	2013	2012	
28.019	Sulphur Tubic	<i>Esperia sulphurella</i>	12-Apr	23-Jun	Local	2013	2004	2012
28.025	Light Streak	<i>Pleurota bicostella</i>	15-Jun	11-Jul	Local	2013	2002	2012
29.001	March Tubic	<i>Diurnea fagella</i>	13-Mar	20-May	Local	2013	2013	2012
29.002	November Tubic	<i>Diurnea lipsiella</i>	11-Oct	20-Oct	Local	2013	2012	
29.003	Spring Tubic	<i>Dasystema salicella</i>			Rare		1961	
30.003	Orange-headed Tubic	<i>Pseudatemelia josephinae</i>	04-Jul	04-Jul	Rare		1977	
31.001	Long-horned Flat-body	<i>Carcina quercana</i>	20-Jul	25-Aug	Local	2013	2013	2011
32.002	Dawn Flat-body	<i>Semioscopis steinkellneriana</i>	23-Apr	21-May	Local		2011	
32.007	Red-letter Flat-body	<i>Agonopterix ocellana</i>	01-Aug - 22-Oct	14-Mar - 04-Jun	Local	2013	2013	2012
32.009	Small Purple Flat-body	<i>Agonopterix purpurea</i>	09-Jun	10-Aug	Rare		2013	
32.010	Sallow Flat-body	<i>Agonopterix conterminella</i>	15-Jul	19-Jul	Local	2006	1961	
32.011	Broom Flat-body	<i>Agonopterix scopariella*</i>	05-Aug - 30-Oct	26-Feb - 20-May	Local	2012	2011	
32.015	Ruddy Flat-body	<i>Agonopterix subpropinquella*</i>	10-Aug	10-May	Rare		2013	
32.016	Black-spot Flat-body	<i>Agonopterix propinquella</i>	13-Aug	15-Jun	Local	2012	2013	1954
32.017	Brindled Flat-body	<i>Agonopterix arenella</i>	20-Aug - 24-Oct	25-Mar - 29-May	Common	2013	2013	2013
32.018	Common Flat-body	<i>Agonopterix heracliiana</i>	24-Jun - 05-Oct	20-Feb - 27-May	Common	2013	2013	2013
32.019	Large Carrot Flat-body	<i>Agonopterix ciliella</i>	22-Aug - 16-Sep	22-Jan - 12-May	Local		2006	2011
32.023	Rolling Carrot Flat-body	<i>Agonopterix rotundella</i>	07-Sep	07-Sep	Rare			2012
32.024	Dusted Flat-body	<i>Agonopterix assimilella</i>	04-Jun	19-Jul	Local	2011	2010	1994
32.026	Straw Flat-body	<i>Agonopterix kaekeritziana</i>	03-Aug	22-Aug	Local		2009	2013
32.029	Gorse Flat-body	<i>Agonopterix umbellana</i>	22-Jul - 10-Oct	10-Mar - 12-Apr	Local	2012	2013	2012
32.030	Dark-fringed Flat-body	<i>Agonopterix nervosa</i>	08-Jul	04-Sep	Local	2013	2013	2013
32.031	Brown-spot Flat-body	<i>Agonopterix alstromeriana</i>	10-Apr	10-Apr	Local	2011	1994	
32.032	Angelica Flat-body	<i>Agonopterix angelicella</i>	05-Jun	29-Sep	Local	1983	2011	2006
32.035	Coastal Flat-body	<i>Agonopterix yeatiana</i>	23-Jul - 25-Aug	13-Apr - 20-May	Local		2013	2013
32.036	Parsnip Moth	<i>Depressaria radiella</i>	23-Aug - 02-Oct	16-Feb - 25-May	Local	2013	2013	2013
32.038	Brown Flat-body	<i>Depressaria badiella</i>	03-Sep	07-Sep	Rare	2010		2012
32.039	Dingy Flat-body	<i>Depressaria daucella</i>	21-Jul - 07-Oct	11-Mar - 18-Apr	Local	2012	2012	2013
32.042	Pignut Flat-body	<i>Depressaria pulcherrimella</i>	26-Jun	06-Sep	Local	1961	1997	1982
34.004	Bulrush Cosmet	<i>Limnaecia phragmitella</i>	10-Jul	05-Sep	Local		2011	
35.010	Vetch Sober	<i>Aproaerema anthyllidella</i>	08-Aug	08-Aug	Local		2004	1899
35.017	Heather Groundling	<i>Neofaculta ericetella</i>	07-May	30-Jun	Local	2012	2013	2012
35.018	Square-spot Crest	<i>Hypatima rhomboidella</i>	25-Jun	27-Sep	Local	2013	2012	2012
35.020	Small Crest	<i>Anarsia spartiella</i>	22-Jun	27-Aug	Local	2011	2003	2010
35.026	Ash-coloured Sober	<i>Acompsia cinerella</i>	21-Jul	25-Aug	Local	2012	2006	
35.031	Orange Crest	<i>Helcystogramma rufescens</i>	04-Aug	04-Aug	Rare		1997	
35.036	Six-spot Neb	<i>Chrysoesthia sexguttella</i>	25-Apr	06-Jul	Local		2010	2013
35.038	House Groundling	<i>Bryotropha domestica</i>	04-Jul	10-Aug	Local		2012	1997
35.039	Polished Groundling	<i>Bryotropha politella</i>	12-Jul	29-Sep	Rare	2013	2012	
35.040	Cineros Groundling	<i>Bryotropha terrella</i>	20-Jun	25-Aug	Local	2013	2012	2006
35.041	Desert Groundling	<i>Bryotropha desertella</i>	21-Jun	06-Aug	Local		2000	2008
35.042	Mountain Groundling	<i>Bryotropha boreella</i>	13-Jul	24-Aug	Rare	2012		
35.046	Dull Red Groundling	<i>Bryotropha senectella</i>	05-Jun	25-Aug	Rare	2013	2012	

ABH	Vernacular	Scientific	Earliest	Latest	Status	VC72	VC73	VC74
35.047	Dark Groundling	<i>Bryotropha affinis</i>	21-May	23-Jul	Local	2011	2013	
35.048	Sandhill Groundling	<i>Bryotropha umbrosella</i>	09-Jun	09-Jun	Rare		1983	
35.049	Obscure Groundling	<i>Bryotropha similis</i>	28-Jun	01-Aug	Local		2000	
35.050	Heather Neb	<i>Aristotelia ericinella</i>	01-Aug	04-Sep	Local	2013	2013	
35.056	Burdock Neb	<i>Metzneria lappella</i>			Rare			2011
35.058	Meadow Neb	<i>Metzneria metzneriella</i>	22-Jun	09-Aug	Local	2013	2012	
35.065	Bracken Neb	<i>Monochroa cytisella</i>	21-Jul	21-Jul	Local		2000	2006
35.066	Common Plain Neb	<i>Monochroa tenebrella</i>	18-Jun	26-Jun	Local	1982	2005	2005
35.071	Buff-marked Neb	<i>Monochroa lucidella</i>	22-Jun	02-Aug	Local		2011	
35.093	Gorse Groundling	<i>Mirificarma mulinella</i>	25-Jul	10-Sep	Local	1998	2013	2013
35.094	Dusky Groundling	<i>Aroga velocella</i>	23-Jul	23-Jul	Rare		2002	
35.096	Downland Groundling	<i>Chionodes fumatella</i>	29-Jul	29-Jul	Rare		2004	
35.101	Dark-striped Groundling	<i>Gelechia sororculella</i>	01-Aug	13-Aug	Local	2013	1996	
35.109	Pointed Groundling	<i>Scrobipalpa acuminatella</i>	08-May - 28-May	16-Aug	Local		2002	1988
35.113	Sea-aster Groundling	<i>Scrobipalpa salicorniae</i>	23-Jul	23-Jul	Rare		2002	
35.114	Saltern Groundling	<i>Scrobipalpa instabilella*</i>	02-Aug	02-Aug	Rare		2004	
35.115	Common Sea Groundling	<i>Scrobipalpa nitentella</i>	04-Jul	21-Jul	Local		2009	2011
35.116	Summer Groundling	<i>Scrobipalpa obsoletella</i>	10-Jul	03-Aug	Rare		2004	2011
35.117	Goosefoot Groundling	<i>Scrobipalpa atriplicella</i>	29-Jul	29-Jul	Rare		1983	
35.119	Buck's-horn Groundling	<i>Scrobipalpa samadensis</i>	03-Jul	06-Oct	Local		2010	2013
35.122	Atlantic Groundling	<i>Scrobipalpa clintoni</i>			Local		1988	2005
35.123	Winter Groundling	<i>Scrobipalpa costella</i>	25-Aug	08-Oct	Local	2010	2006	2006
35.129	Campion Groundling	<i>Caryocolum viscariella</i>	19-Jul	19-Jul	Local		2013	2012
35.130	Coast Groundling	<i>Caryocolum vicinella</i>	08-Sep	08-Sep	Rare			2012
35.131	Beautiful Groundling	<i>Caryocolum marmorea</i>	22-Aug	22-Aug	Local		2003	1961
35.132	Mouse-ear Groundling	<i>Caryocolum fratemella</i>	19-Jul	12-Aug	Local	2013	2011	
35.133	Short-barred Groundling	<i>Caryocolum blandella</i>	01-Aug	13-Aug	Rare	2013	2013	2013
35.146	Large Groundling	<i>Teleiopsis diffinis</i>	06-Jun	24-Sep	Local	2013	2011	1983
35.148	Elm Groundling	<i>Carpatolechia fugitivella</i>	30-Aug	09-Jul	Rare	1982		
35.151	Black-speckled Groundling	<i>Carpatolechia proximella</i>	01-Jun	08-Jul	Local	2012	2006	
35.153	Tawny Groundling	<i>Pseudotelphusa paripunctella</i>	04-Jun	04-Jun	Rare		1993	
35.159	Pine Groundling	<i>Exoteleia dodecella</i>	26-Jun	26-Jun	Local		2009	1988
36.001	Poplar Cosmet	<i>Batrachedra praeangusta</i>	09-Jul	31-Jul	Local	2013		
37.006	Rose Case-bearer	<i>Coleophora gryhipennella</i>			Rare	1961		
37.007	Tipped Oak Case-bearer	<i>Coleophora flavipennella</i>	21-Jul	21-Jul	Rare		2011	
37.015	Common Case-bearer	<i>Coleophora serratella</i>	23-Jun	25-Jul	Local	1982	2012	2011
37.016	Apple & Plum Case-bearer	<i>Coleophora spinella*</i>			Rare		2003	
37.022	Osier Case-bearer	<i>Coleophora luscinaepennella</i>	25-Jun	25-Jun	Local		2005	2005
37.028	Least Case-bearer	<i>Coleophora juncicolella</i>	07-Jul	07-Jul	Local		2000	1961
37.040	Sandy Case-bearer	<i>Coleophora lithargyrinella</i>			Rare		2005	
37.044	Lotus Case-bearer	<i>Coleophora discordella</i>			Rare		1961	2013
37.048	Meadow Case-bearer	<i>Coleophora mayrella</i>	26-Jun	27-Jul	Local		2011	
37.055	Ling Case-bearer	<i>Coleophora pyrrhulipennella</i>			Rare		1961	
37.063	Gorse Case-bearer	<i>Coleophora albicosta</i>	06-May	25-Jun	Local	1981	2011	2011
37.066	Larch Case-bearer	<i>Coleophora laricella</i>	16-Jun	19-Jul	Local	1961	2009	1961
37.068	Saltern-rush Case-bearer	<i>Coleophora adjunctella</i>	03-Jul	03-Jul	Rare			2011
37.069	Buff Rush Case-bearer	<i>Coleophora caespitiella</i>	16-Jun	15-Jul	Local		2009	
37.070	Jointed-rush Case-bearer	<i>Coleophora tamesis</i>	26-Jun	27-Jul	Local	2005	2010	
37.071	Grey Rush Case-bearer	<i>Coleophora glaucicolella</i>	22-Jun	02-Jul	Local		2010	1988
37.072	Wood-rush Case-bearer	<i>Coleophora otidipennella</i>	28-May	22-Jun	Local		2000	
37.073	Common Rush Case-bearer	<i>Coleophora alticolella</i>	21-Jun	02-Jul	Common	1961	2010	2005
37.074	Small Rush Case-bearer	<i>Coleophora taeniipennella</i>	15-Jul	24-Jul	Rare	1961	2010	
37.078	Sea-rush Case-bearer	<i>Coleophora maritimella</i>	05-Jul	17-Jul	Rare		2007	
37.080	Golden-rod Case-bearer	<i>Coleophora virgaureae</i>	08-Aug	08-Aug	Rare	1961	2010	
37.083	Orache Case-bearer	<i>Coleophora saxicolella</i>	19-Jul	19-Jul	Rare		2006	
37.084	Speckled Case-bearer	<i>Coleophora stemipennella*</i>	19-Jul	19-Jul	Rare		2006	
37.086	Pale Orache Case-bearer	<i>Coleophora versurella</i>	04-Jul	21-Jul	Local	2011	2002	2011
37.093	Pale Thistle Case-bearer	<i>Coleophora peribenanderi</i>	19-Jul	19-Jul	Rare	1994		
37.095	Verge Case-bearer	<i>Coleophora trochilella*</i>			Rare		1996	
37.099	Hedge Case-bearer	<i>Coleophora striatipennella</i>	16-Jun	15-Aug	Local	2012	2011	1988

ABH	Vernacular	Scientific	Earliest	Latest	Status	VC72	VC73	VC74
37.106	Dark Thistle Case-bearer	<i>Coleophora paripennella</i>			Local	1961	1961	2011
38.004	Swan-feather Dwarf	<i>Elachista argentella</i>	06-May	12-Jul	Common	2012	2013	2012
38.008	Western Dwarf	<i>Elachista triseriatella</i>	26-Jun	07-Jul	Local		2001	2005
38.016	Buff Dwarf	<i>Elachista subalbidella</i>	09-Jun	09-Jun	Rare		2005	
38.018	Yellow-tipped Dwarf	<i>Elachista bisulcella</i>	29-Jul	29-Jul	Rare		1993	
38.022	Twin-barred Dwarf	<i>Elachista gleichenella</i>			Rare		1961	
38.025	Black-headed Dwarf	<i>Elachista atricomella</i>	16-Jun	07-Sep	Local	2013	2013	2012
38.026	Moorland Dwarf	<i>Elachista kilmunella</i>	09-May	10-Aug	Local	2013	2013	2013
38.028	Marsh Dwarf	<i>Elachista alpinella</i>	26-Jun	14-Aug	Local	2013	2013	1988
38.029	Yellow-headed Dwarf	<i>Elachista luticomella</i>			Rare		1961	
38.030	White-headed Dwarf	<i>Elachista albifrontella</i>	25-Jun	28-Jul	Local	1994	2013	
38.032	Pearled Dwarf	<i>Elachista apicipunctella</i>	09-Aug	09-Aug	Rare			2013
38.036	Obscure Dwarf	<i>Elachista humilis</i>	18-Jul	22-Aug	Local	2013	2013	1994
38.037	Little Dwarf	<i>Elachista canapennella</i>	21-Apr	11-Sep	Local	2013	2013	2013
38.038	Red-brindled Dwarf	<i>Elachista rufocinerea</i>	07-May	07-May	Local		1998	
38.039	Triple-spot Dwarf	<i>Elachista maculicerusella</i>	27-May	28-Aug	Local	2013	2012	1988
38.040	Scarce Dwarf	<i>Elachista trapeziella</i>			Rare	1961		
38.042	Dusky Dwarf	<i>Elachista serricomis</i>	10-Jul	10-Jul	Rare		1982	
38.043	Saltern Dwarf	<i>Elachista scirpi</i>			Rare		2003	
38.044	Small Bog Dwarf	<i>Elachista eleochariella</i>	16-Jul	16-Jul	Rare			1994
38.046	Cotton-grass Dwarf	<i>Elachista albidella</i>	28-Jul	28-Jul	Rare	1963		
38.047	Broken-barred Dwarf	<i>Elachista freyerella</i>	31-Jul	11-Sep	Rare	2013		
39.001	Hawthorn Cosmet	<i>Blastodacna hellerella</i>	30-Jun	19-Jul	Local	1994	2013	1989
40.001	Large Dark Cosmet	<i>Mompha conturbatella</i>	05-Jul	16-Jul	Local	2012	1996	
40.003	Rust-blotch Cosmet	<i>Mompha lacteella</i>	07-Jul	13-Aug	Rare	2012	2013	2012
40.004	Marbled Cosmet	<i>Mompha propinquella</i>	02-Jul	18-Aug	Local	2013	2013	
40.008	Garden Cosmet	<i>Mompha subbistrigella</i>	14-Feb	11-Apr	Rare	2007		
40.013	Red Cosmet	<i>Mompha locupletella</i>	16-Jun	29-Sep	Local	2013	2013	
40.015	Little Cosmet	<i>Mompha raschkiella</i>	16-Jun	31-Aug	Local	2013	2006	2013
41.002	Furness Dowd	<i>Blastobasis adustella</i>	15-Jun	27-Sep	Common	2013	2013	2013
41.003	Wakely's Dowd	<i>Blastobasis lacticolella</i>	10-May	24-Oct	Local	2013	2013	2013
43.004	White-dusted Owlet	<i>Scythris picaepennis</i>	26-Jun	26-Jun	Rare			2005
44.001	Twenty-plume Moth	<i>Alucita hexadactyla</i>	03-Feb	09-Dec	Common	2013	2013	2013
45.001	Saltmarsh Plume	<i>Agdistis bennetii</i>	30-Jun	16-Jul	Rare	1998		
45.004	Triangle Plume	<i>Platyptilia gonodactyla</i>	08-Jul	29-Oct	Local	2013		2011
45.006	Hoary Plume	<i>Platyptilia isodactylus</i>	23-Aug	04-Oct	Rare	2013		2003
45.008	Yarrow Plume	<i>Gillmeria pallidactyla</i>	27-Jun	12-Aug	Common	2013	2013	2013
45.010	Beautiful Plume	<i>Amblyptilia acanthadactyla</i>	12-Jul	15-Apr	Local	2013	2013	2011
45.011	Brindled Plume	<i>Amblyptilia punctidactyla</i>	08-Jul	26-Sep	Local	1992	2012	
45.012	Brown Plume	<i>Stenoptilia pterodactyla</i>	20-Jun	25-Aug	Local	2011	2011	2012
45.013	Twin-spot Plume	<i>Stenoptilia bipunctidactyla</i> *	29-Jun	26-Sep	Local	1984	2012	2012
45.021	Dowdy Plume	<i>Stenoptilia zophodactylus</i>	19-Aug	19-Aug	Rare		2012	
45.027	Scarce Light Plume	<i>Crombrugghia laetus</i>	08-Jul	08-Jul	Rare		1998	2011
45.028	Wood-sage Plume	<i>Capperia britanniodactylus</i>	01-Jul	11-Jul	Local	1997	1998	1985
45.030	White Plume Moth	<i>Pterophorus pentadactyla</i>	02-Jun	24-Aug	Common	2013	2013	2011
45.033	Thyme Plume	<i>Merrifieldia leucodactyla</i>	18-Jun	10-Aug	Local		2013	2005
45.043	Hemp-agrimony Plume	<i>Adaina microdactyla</i>	13-Jun	13-Jun	Rare		1986	
45.044	Common Plume	<i>Emmelina monodactyla</i>	28-Jan	24-Oct	Common	2011	2013	1997
46.001	Bramble False-feather	<i>Schreckensteinia festaliella</i>	17-May	06-Sep	Local	1975	1996	2013
47.001	Yellow-spotted Lance-wing	<i>Phaulernis fulviguttella</i>	16-Aug	16-Aug	Rare			1984
47.005	Garden Lance-wing	<i>Epermenia chaerophylliella</i>	10-Aug	10-Aug	Local	2013	1994	1994
48.001	Common Nettle-tap	<i>Anthophila fabriciana</i>	13-May	24-Oct	Common	2013	2013	2013
48.002	Small Twitcher	<i>Prochoreutis myllerana</i>	07-Jun - 23-Jul	22-Aug - 01-Sep	Local		2013	
48.005	Vagrant Twitcher	<i>Tebenna micalis</i>	21-Jun	21-Jun	Migrant		1998	
49.001	White-barred Twist	<i>Olindia schumacherana</i>	17-Jun	22-Jul	Local	1982	2012	
49.004	Red-barred Tortrix	<i>Ditula angustiorana</i>	02-Jul	21-Aug	Local	2013	2011	
49.005	Brown-barred Twist	<i>Epagoge grotiana</i>	18-Jul	18-Jul	Rare		2011	
49.008	Cinquefoil Twist	<i>Philedone gemingana</i>	13-Jul	08-Aug	Local	1998	2012	
49.009	Common Twist	<i>Capua vulgana</i>	06-May	04-Jul	Local	2012	2011	1989
49.010	Heath Twist	<i>Philedonides lunana</i>	05-Apr	16-May	Local	2004		1982

ABH	Vernacular	Scientific	Earliest	Latest	Status	VC72	VC73	VC74
49.013	Large Fruit-tree Tortrix	<i>Archips podana</i>	22-Jun	28-Jul	Common	2013	2008	
49.016	Rose Tortrix	<i>Archips rosana</i>	01-Aug	01-Aug	Rare	2013		
49.020	Heather Twist	<i>Argyrotaenia ljunghiana</i>	10-May	18-Jun	Local	1977	2006	
49.022	Brindled Twist	<i>Ptycholoma lecheana</i>	25-Jun	27-Jul	Local		2005	1989
49.023	White-faced Twist	<i>Pandemis cinnamomeana</i>	26-Jun	02-Oct	Local	2013	2013	2013
49.024	Chequered Fruit-tree Tortrix	<i>Pandemis corylana</i>	26-Jun	15-Aug	Local	2013	2010	
49.025	Barred Fruit-tree Tortrix	<i>Pandemis cerasana</i>	17-Jun	10-Sep	Common	2013	2013	2013
49.026	Dark Fruit-tree Tortrix	<i>Pandemis heparana</i>	16-Jun	23-Aug	Common	2013	2013	2013
49.028	Dark-barred Twist	<i>Syndemis musculana</i>	06-May	08-Jul	Common	2013	2013	2013
49.029	Large Ivy Twist	<i>Lozotaenia forsterana</i>	25-Jun	09-Aug	Local	2006	2012	2011
49.031	Timothy Tortrix	<i>Aphelia paleana</i>	10-Jun	03-Sep	Common	2013	2013	2013
49.032	Northern Grey Twist	<i>Aphelia unitana</i>	28-Jun	28-Jun	Local	1979	2000	
49.033	Bilberry Tortrix	<i>Aphelia viburnana</i>	20-Jun	24-Sep	Local	2011	2013	2012
49.035	Obscure Twist	<i>Clepsis senecionana</i>	22-May	22-Jul	Local	2011	2012	
49.037	Cyclamen Tortrix	<i>Clepsis spectrana</i>	29-May	14-Aug	Local	2012	2013	2011
49.038	Privet Twist	<i>Clepsis consimilana</i>	16-Jun	01-Aug	Local	2013	2012	2011
49.039	Light Brown Apple Moth	<i>Epiphyas postvittana</i>	31-May	21-Oct	Local		2011	2013
49.043	Autumnal Shade	<i>Exapate congelatella</i>	01-Oct	10-Nov	Local	2006		
49.044	Winter Shade	<i>Tortricodes altemella</i>	17-Feb	20-Mar	Local	2013	1993	
49.045	Dotted Shade	<i>Eana osseana</i>	13-Jul	23-Aug	Local	2013	2013	1899
49.047	Bluebell Shade	<i>Eana incanana</i>	31-Jul	31-Jul	Rare			2006
49.048	Large Mottled Shade	<i>Eana penziana colquhounana</i>	01-Jul	11-Aug	Local	1943	2004	2013
49.049	Light Grey Tortrix	<i>Cnephasia incertana</i> *	15-Jun	03-Aug	Local	2012	2012	2011
49.050	Grey Tortrix	<i>Cnephasia stephensiana</i> *	05-Jul	07-Sep	Local	2012	2012	2012
49.051	Flax Tortrix	<i>Cnephasia asseclana</i>	15-Jun	18-Aug	Local	2013	2013	2012
49.056	Coast Shade	<i>Cnephasia conspersana</i>	25-Jul	30-Jul	Local		1983	2012
49.059	Green Oak Tortrix	<i>Tortrix viridana</i>	20-Jun	08-Aug	Common	2011	2011	1989
49.060	Yellow Oak Button	<i>Aleimma loeflingiana</i>	28-Jun	27-Jul	Local	2013	2013	
49.061	White-triangle Button	<i>Acleris holmiana</i>	03-Aug	03-Aug	Rare		2002	
49.062	Maple Button	<i>Acleris forsskaleana</i>	05-Jul	17-Sep	Local	1999	2013	2013
49.063	Yellow Rose Button	<i>Acleris bergmanniana</i>	21-Jun	19-Jul	Local	2011	2012	1998
49.064	Caledonian Button	<i>Acleris caledoniana</i>	06-Aug	30-Oct	Local	2012	2005	2013
49.065	Strawberry Tortrix	<i>Acleris comariana</i>	05-Sep	23-Oct	Local	2013	2013	2013
49.066	Dark-triangle Button	<i>Acleris laterana</i>	16-Aug	13-Oct	Common	2013	2013	2013
49.067	Perth Button	<i>Acleris abietana</i>	13-Apr	13-Apr	Rare		2011	
49.069	Ashy Button	<i>Acleris sparsana</i>	19-Aug	08-Nov	Local	2013	2011	2013
49.070	Rhomboid Tortrix	<i>Acleris rhombana</i>	09-Aug	15-Oct	Local	2013	2012	2013
49.071	Notch-wing Button	<i>Acleris emargana</i> *	06-Aug	22-Oct	Local	2013	2013	2013
49.077	Garden Rose Tortrix	<i>Acleris variegana</i>	21-Jul	25-Oct	Common	2013	2013	2013
49.078	Ginger Button	<i>Acleris aspersana</i>	28-Jul	21-Sep	Common	2013	2013	2013
49.080	Sallow Button	<i>Acleris hastiana</i>	27-Apr - 09-Jun	26-Aug - 30-Oct	Local	2011	2013	2012
49.082	Heath Button	<i>Acleris hyemana</i>	09-Oct - 08-Nov	05-Apr - 13-May	Local	2013	2004	1982
49.083	Rusty Oak Button	<i>Acleris ferrugana</i> *	24-Sep	24-Sep	Local	2005	2008	1954
49.087	Lichen Button	<i>Acleris literana</i>	25-Aug - 22-Sep	06-Apr - 13-Apr	Local	2013	2011	
49.088	Northern Button	<i>Acleris lipsiana</i>			Rare		1950	
49.089	Sweet-gale Button	<i>Acleris rufana</i>	06-Apr	26-May	Local		2013	2011
49.090	Brassy Twist	<i>Eulia ministrana</i>	01-May	25-Jun	Local	2004	2012	
49.091	Yellow-spot Twist	<i>Pseudargyrotoza conwagana</i>	30-May	30-Aug	Common	2012	2013	1994
49.096	Bluebell Conch	<i>Hysterophora maculosana</i>	09-Jun	09-Jun	Rare	1977	2013	
49.097	Straw Conch	<i>Cochylimorpha straminea</i>	16-Jun - 20-Jul	22-Aug - 24-Aug	Local	2013	2006	2011
49.101	Water-mint Conch	<i>Phalonidia manniana</i>	01-Aug	01-Aug	Rare		2002	
49.103	Large Saltmarsh Conch	<i>Phalonidia affinitana</i>	21-May	16-Jul	Local	2012	2010	
49.105	Small Saltern Conch	<i>Gynnidomorpha vectisana</i>	10-Aug	12-Aug	Local	1995	2012	
49.106	Fen Conch	<i>Gynnidomorpha minimana</i>	29-Jun	29-Jun	Rare			1988
49.109	Common Yellow Conch	<i>Agapeta hamana</i>	16-Jun	11-Aug	Common	2012	2013	2011
49.110	Knapweed Conch	<i>Agapeta zoegana</i>	26-Jun	15-Aug	Local	2011	2013	2011
49.111	Marbled Conch	<i>Eupoecilia angustana angustana</i>	16-Jun	06-Sep	Local	2013	2013	2013



ABH	Vernacular	Scientific	Earliest	Latest	Status	VC72	VC73	VC74
49.115	Devil's-bit Conch	<i>Aethes piercei</i>	22-Jun	22-Jun	Rare			1998
49.120	Yarrow Conch	<i>Aethes smeathmanniana</i>	30-Jun	08-Sep	Local	2012	2010	2012
49.127	Thistle Conch	<i>Aethes cnicana</i>	04-Jun	28-Jul	Common	2013	2013	2012
49.128	Burdock Conch	<i>Aethes rubigana</i>	26-Jun	01-Aug	Local	2005	2011	2011
49.129	Hemp-agrimony Conch	<i>Cochylidia rupicola</i>	07-Jun	07-Jun	Rare		1998	
49.132	Chamomile Conch	<i>Cochylidia implicitana*</i>	04-Jul	01-Sep	Local		2003	2013
49.133	Birch Conch	<i>Cochylis nana</i>	23-Jun	23-Jun	Local	1950	1996	
49.137	Little Conch	<i>Cochylis dubitana</i>	03-Aug	03-Aug	Rare		2005	
49.139	Black-headed Conch	<i>Cochylis atricapitana</i>	21-Apr	25-Aug	Local	2013	2012	2013
49.140	Sheep's-bit Conch	<i>Cochylis pallidana</i>	07-Jun	26-Jun	Rare		1984	2005
49.142	Red-fringed Conch	<i>Falseuncaria ruficiliana</i>	28-May	27-Jun	Local	2012	2000	
49.146	Short-barred Marble	<i>Apotomis semifasciana</i>	12-Jul	28-Jul	Local	2011	2013	2010
49.149	White-shouldered Marble	<i>Apotomis turbidana</i>	10-Jun	26-Jul	Local	2013	2011	
49.150	Birch Marble	<i>Apotomis betuletana</i>	17-Jun	07-Sep	Common	2012	2013	1997
49.151	Sallow Marble	<i>Apotomis capreana</i>	14-Jun	20-Jul	Rare		2003	
49.152	Narrow-winged Marble	<i>Apotomis sororculana</i>	25-Jun	25-Jun	Rare	1977		
49.153	Bilberry Marble	<i>Apotomis sauciana</i>	26-Jul	26-Jul	Rare	2013		
49.154	Woodland Marble	<i>Orthotaenia undulana</i>	30-May	17-Aug	Local	1977	2012	1996
49.156	Marbled Orchard Tortrix	<i>Hedya nubiferana</i>	02-Jun	13-Aug	Common	2012	2013	2011
49.157	Plum Tortrix	<i>Hedya pruniana</i>	07-Jun	30-Jul	Local	2012	2013	2011
49.159	Shoulder-spot Marble	<i>Hedya atropunctana</i>	25-Jun	04-Jul	Local		2010	
49.161	Barred Marble	<i>Celypha striana</i>	05-Jul	05-Jul	Rare			2011
49.162	Roseate Marble	<i>Celypha rosaceana</i>	21-Jul	21-Jul	Local			2006
49.164	Thyme Marble	<i>Celypha cespitana</i>			Rare		2002	
49.166	Common Marble	<i>Celypha lacunana</i>	20-May	23-Sep	Common	2013	2013	2013
49.167	Silver-striped Marble	<i>Celypha rivulana</i>	26-Jun	19-Jul	Local	1950	2000	
49.172	Large Marble	<i>Phiaris schulziana</i>	13-Jun	25-Aug	Common	2012	2013	
49.173	Olive Marble	<i>Phiaris micana</i>	06-Jul	10-Aug	Local	2013	2005	2012
49.174	Northern Marble	<i>Phiaris palustrana</i>	29-May	31-Jul	Local	2013	2005	2012
49.179	Arched Marble	<i>Olethreutes arcuella</i>	03-Jun	03-Jun	Rare		1997	
49.183	Smoky-barred Marble	<i>Lobesia abscisana</i>	13-Jul	13-Jul	Rare		2010	
49.185	Shore Marble	<i>Lobesia littoralis</i>	12-Jun - 26-Jun	07-Aug - 07-Sep	Local	1970	2013	2013
49.188	Bordered Marble	<i>Endothenia marginana</i>	23-Aug	27-Aug	Rare	2013		2013
49.193	Blotched Marble	<i>Endothenia quadrimaculana</i>	27-Jun	24-Aug	Local	2013	2011	1999
49.194	Rush Marble	<i>Bactra lancealana</i>	09-May	08-Oct	Common	2013	2013	2013
49.195	Mottled Marble	<i>Bactra furfurana</i>	08-Jun	18-Aug	Local		2011	2011
49.196	Scarce Sedge Marble	<i>Bactra lacteana</i>	08-Jul	13-Jul	Local		2010	2011
49.197	Saltern Marble	<i>Bactra robustana</i>	13-Jun	27-Jun	Local		2006	
49.201	Broken-barred Roller	<i>Ancylis unguicella</i>	10-May	20-Aug	Local		2004	1996
49.202	Bridge Roller	<i>Ancylis uncella</i>	13-Jun	13-Jun	Rare		1981	
49.207	Festooned Roller	<i>Ancylis geminana*</i>	18-May	15-Jun	Rare	1976	1996	
49.211	Bilberry Roller	<i>Ancylis myrtillana</i>	23-May	09-Jul	Rare	2012	2013	
49.214	Common Roller	<i>Ancylis badiana</i>	24-Apr	22-Aug	Local	2008	2011	2011
49.216	Red Roller	<i>Ancylis mitterbacheriana</i>			Rare	1820	1950	
49.220	Bilberry Bell	<i>Rhopobota myrtillana</i>	29-May	29-May	Rare		2012	
49.223	Holly Tortrix	<i>Rhopobota naevana</i>	24-Jun	04-Sep	Common	2013	2013	2013
49.224	Bud Moth	<i>Spilonota ocellana</i>	21-Jun	10-Aug	Local	1950	2005	1998
49.225	Larch-bud Moth	<i>Spilonota laricana</i>	18-Aug	18-Aug	Rare	1977		
49.228	Brown Alder Bell	<i>Epinotia sordidana</i>	08-Oct	08-Oct	Rare	2010		
49.229	Large Sallow Bell	<i>Epinotia caprana</i>	29-Jul	25-Aug	Local	1983	2006	
49.230	White-blotch Bell	<i>Epinotia trigonella</i>	21-Aug	23-Sep	Local	2013	2013	
49.231	Large Birch Bell	<i>Epinotia brunnichana</i>	24-Jul	30-Aug	Local	2005	1997	
49.233	Variable Bell	<i>Epinotia solandriana</i>	25-Jul	30-Aug	Local	1999	1996	1997
49.234	Brown Elm Bell	<i>Epinotia abbreviana</i>	27-Jun	10-Jul	Local		1999	1988
49.238	Willow Tortrix	<i>Epinotia cruciana</i>	25-Jun	29-Aug	Local	2013	2011	1983
49.239	Moorland Bell	<i>Epinotia mercuriana</i>	24-Jul	23-Aug	Rare	2013	2013	
49.240	Common Birch Bell	<i>Epinotia immundana</i>	17-May - 25-Jun	30-Jul - 06-Sep	Local	2013	2011	
49.244	White Sallow Bell	<i>Epinotia subocellana</i>	05-Jun	02-Jul	Local	2011	2012	2005
49.245	Square-barred Bell	<i>Epinotia tetraquetrana</i>	10-May	23-Jun	Local	1982	2011	1996

ABH	Vernacular	Scientific	Earliest	Latest	Status	VC72	VC73	VC74
49.246	Dingy Spruce Bell	<i>Epinotia pygmaeana</i>	13-Apr	27-May	Local		1997	
49.248	Nut Bud Moth	<i>Epinotia tenerana</i>	06-Jul	22-Sep	Local	2013	2011	2013
49.249	Small Birch Bell	<i>Epinotia ramella</i>	31-Jul	27-Sep	Common	2013	2013	2009
49.251	Pine Bell	<i>Epinotia rubiginosana</i>	15-Jun	15-Jun	Rare		2002	
49.252	Common Spruce Bell	<i>Epinotia tedella</i>	19-May	06-Jul	Local	2012	2013	1989
49.254	Crescent Bell	<i>Epinotia bilunana</i>	16-Jun	02-Jul	Local		2010	2006
49.255	Grey Poplar Bell	<i>Epinotia nisella</i>	31-Jul	08-Sep	Local	2013	2013	2013
49.257	Larch Tortrix	<i>Zeiraphera griseana</i>	14-Jul	25-Jul	Local	1998	1950	
49.259	Spruce Bud Moth	<i>Zeiraphera ratzeburgiana</i>	11-Jul	27-Sep	Common	2011	2012	
49.260	Cock's-head Bell	<i>Zeiraphera isertana</i>	09-Jul	12-Aug	Local	1982	2002	
49.264	Two-coloured Bell	<i>Eucosma obumbratana</i>	09-Jul	09-Aug	Local		2011	2013
49.265	Hoary Belle	<i>Eucosma cana</i>	06-Jun	07-Aug	Common	2013	2013	2013
49.266	Bright Bell	<i>Eucosma hohenwartiana</i>	24-Jun	28-Aug	Common	2012	2013	2011
49.267	Fulvous Bell	<i>Eucosma fulvana</i>	07-Jul	07-Jul	Rare		1984	1899
49.268		<i>Eucosma parvulana</i>	09-Jul	09-Jul	Rare			2011
49.269	Marbled Bell	<i>Eucosma campolliana</i>	26-Jun	13-Aug	Local	2012	2013	2013
49.272	Saltmarsh Bell	<i>Eucosma tripoliana</i>	09-Jul	09-Jul	Rare	2011		
49.279	Common Cloaked Shoot	<i>Gypsonoma dealbana</i>	27-Jun	31-Jul	Local	2013	2010	
49.281	White Cloaked Shoot	<i>Gypsonoma sociana</i>	21-May	20-Jul	Local	2012	1984	2011
49.284	Colt's-foot Bell	<i>Epiblema sticticana</i>	02-Jul	11-Jul	Rare	2011		
49.285	Thistle Bell	<i>Epiblema scutulana</i>	13-May	09-Jul	Common	2013	2013	2011
49.286	Knapweed Bell	<i>Epiblema cirsiana</i>	25-May	04-Jul	Local	2011	2012	2012
49.290	Butterbur Bell	<i>Epiblema turbidana</i>	07-Jul	07-Jul	Rare	1983		
49.292	Yellow-faced Bell	<i>Notocelia cynosbatella</i>	28-May	06-Jul	Local	2012	2013	2011
49.293	Square-spot Bell	<i>Notocelia tetragonana</i>	11-Jul	21-Jul	Rare			2006
49.294	Bramble Shoot Moth	<i>Notocelia uddmanniana</i>	14-Jun	12-Aug	Local	2013	2013	2011
49.295	Summer Rose Bell	<i>Notocelia roborana</i>	30-May	04-Aug	Local	1983	2013	2011
49.296	Chalk Rose Bell	<i>Notocelia incarnatana</i>	03-Jul	10-Aug	Local		2005	2013
49.297	Common Rose Bell	<i>Notocelia rosaecolana</i>	16-Jun	19-Jun	Rare		2010	
49.298	Triple-blotched Bell	<i>Notocelia trimaculana</i>	31-May	19-Jul	Local	2012	2013	2011
49.301	Pine Resin-gall Moth	<i>Retinia resinella</i>			Local		1950	1997
49.305	Pine Shoot Moth	<i>Rhyacionia buoliana*</i>			Rare	1950		
49.307	Spotted Shoot Moth	<i>Rhyacionia pinivorana</i>	18-Jun	27-Jun	Local	1994		1996
49.309	Lead-coloured Drill	<i>Dichrorampha plumbana</i>	26-Jun	26-Jun	Local		2003	2005
49.310	Dingy Drill	<i>Dichrorampha sedatana</i>	19-May	22-Aug	Local	1980	2003	
49.313	Sharp-winged Drill	<i>Dichrorampha acuminatana</i>	15-Jun	15-Jun	Rare	2011		
49.320	Broad-blotch Drill	<i>Dichrorampha alpinana</i>	24-Jun	28-Jun	Rare	2012		
49.321	Common Drill	<i>Dichrorampha petiverella</i>	29-Jun	17-Aug	Local		2004	2011
49.323	Spike-marked Drill	<i>Dichrorampha montanana</i>	24-May	01-Aug	Local	2011	2010	2012
49.324	Pea Moth	<i>Cydia nigricana</i>	21-May	03-Jul	Rare	1984	1950	2011
49.325	Grey Gorse Piercer	<i>Cydia ulicetana</i>	15-Apr	06-Sep	Common	2012	2013	2012
49.332	Pine-bark Piercer	<i>Cydia coniferana</i>	16-Jun	16-Jun	Rare		1978	
49.341	Marbled Piercer	<i>Cydia splendana</i>	02-Jul	18-Aug	Local	2013	2013	
49.342	Large Beech Piercer	<i>Cydia fagiglandana</i>	19-Jun	19-Jun	Rare			1989
49.345	Red Piercer	<i>Lathronympha strigana</i>	16-Jun	16-Aug	Local	2012	2012	1982
49.354	Vetch Piercer	<i>Grapholita jungiella</i>	24-Apr	07-Jun	Local	2005	2011	
49.357	Plum Fruit Moth	<i>Grapholita funebrana</i>	09-Jul	21-Jul	Rare			2011
49.358	Deep-brown Piercer	<i>Grapholita tenebrosana</i>	27-Jun	27-Jun	Rare			1988
49.359	Pale-bordered Piercer	<i>Grapholita janthinana</i>	06-Jul	31-Jul	Rare	2013	2005	
49.375	Regal Piercer	<i>Pammene regiana</i>	10-Jun	04-Aug	Local	1997	2013	2012
49.379	Orange-spot Piercer	<i>Pammene aurana</i>	12-Jul	04-Aug	Rare	2012	1997	1984
49.380	Purple-shaded Piercer	<i>Pammene gallicana</i>	04-Jun	06-Jul	Local		2004	1983
62.001	Bee Moth	<i>Aphomia sociella</i>	02-Jun	20-Aug	Common	2013	2013	2013
62.005	Lesser Wax Moth	<i>Achroia grisella</i>	20-Aug	20-Aug	Rare	2013	1996	
62.007	Double-striped Knot-horn	<i>Cryptoblabes bistriga</i>	16-Jun	10-Jul	Local	2012	2012	
62.011	Birch Knot-horn	<i>Ortholepis betulae</i>	08-Jul	08-Jul	Rare	1982		
62.012	Brown Knot-horn	<i>Pyla fusca</i>	29-May	26-Aug	Local	2011	2011	2012
62.015	Powdered Knot-horn	<i>Delplanqueia dilutella</i>	07-Jul	08-Aug	Local		2009	2011
62.027	Brown Pine Knot-horn	<i>Dioryctria simplicella</i>	07-Aug	07-Aug	Rare			1997
62.028	Dark Pine Knot-horn	<i>Dioryctria abietella</i>	26-Jun	16-Aug	Local	2010	2013	2005

ABH	Vernacular	Scientific	Earliest	Latest	Status	VC72	VC73	VC74
62.029	Dotted Oak Knot-horn	<i>Phycita roborella</i>			Rare		1983	
62.035	Grey Knot-horn	<i>Acrobasis advenella</i>	16-Jul	05-Sep	Common	2013	2013	2013
62.042	Thistle Ermine	<i>Myelois circumvoluta</i>	07-Jun	09-Aug	Local	2012	2013	2011
62.057	Chalk Knot-horn	<i>Phycitodes maritima</i>	23-Jun	25-Aug	Local		2011	
62.058	Ermine Knot-horn	<i>Phycitodes binaevella</i>	24-Jun	03-Aug	Local		2013	
62.059	Small Clouded Knot-horn	<i>Phycitodes saxicola</i>	08-Jul	24-Aug	Local		2010	2013
62.069	Sandhill Knot-horn	<i>Anerastia lotella</i>	14-Jul	20-Jul	Local		2011	1899
62.072	Meal Moth	<i>Pyralis farinalis</i>	29-May	15-Aug	Local	1820	2004	1907
62.074	Large Tabby	<i>Aglossa pingualis</i>	30-Jul	30-Jul	Rare			1899
62.075	Gold Triangle	<i>Hypsopygia costalis</i>	04-Jul	07-Sep	Local	2005	2011	2011
62.077	Rosy Tabby	<i>Endotricha flammealis</i>	27-Jun	01-Jul	Rare			1899
63.002	Diamond-spot Sable	<i>Loxostege sticticalis</i>	02-Aug	29-Sep	Local	2002		
63.003	Silver-barred Sable	<i>Pyrausta cingulata</i>	11-Jun	10-Jul	Local	1979		1911
63.005	Straw-barred Pearl	<i>Pyrausta despicata</i>	18-Apr - 10-Jun	08-Jul - 07-Aug	Local		2009	2011
63.007	Common Purple & Gold	<i>Pyrausta purpuralis</i>	08-May - 16-Jun	07-Jul - 02-Sep	Common	2013	2013	1911
63.008	Scarce Purple & Gold	<i>Pyrausta ostrinalis</i>	18-May	23-Jun	Local	1979		1983
63.011	Yellow-underwing Pearl	<i>Uresiphita gilvata</i>			Rare		2011	
63.016	Cinereous Pearl	<i>Anania fuscalis</i>	26-May	13-Jul	Common	2013	2013	2012
63.018	Spotted Magpie	<i>Anania coronata</i>	25-Jun	23-Jul	Local	2010	2011	2010
63.021	Golden-rod Pearl	<i>Anania terrealis</i>	24-Jun	24-Jun	Local	1997	1870	
63.025	Small Magpie	<i>Anania hortulata</i>	19-May	11-Aug	Common	2013	2013	2012
63.031	Rusty Dot Pearl	<i>Udea ferrugalis</i>	23-Apr	07-Nov	Migrant	2013	2012	2013
63.033	Pale Straw Pearl	<i>Udea lutealis</i>	04-Jun	24-Sep	Common	2013	2013	2013
63.034	Dusky Pearl	<i>Udea prunalis</i>	04-Jun	22-Aug	Common	2013	2013	2013
63.037	Olive Pearl	<i>Udea olivalis</i>	28-May	10-Aug	Common	2013	2013	2013
63.038	Mother of Pearl	<i>Pleuroptya ruralis</i>	19-Jun	14-Oct	Common	2013	2013	2013
63.044	Vagrant China-mark	<i>Diasemiopsis ramburialis</i>	04-Oct	04-Oct	Rare Migrant		2011	
63.047	Maize Moth	<i>Spoladea recurvalis</i>	01-Oct	01-Oct	Rare Migrant		2011	
63.048	Olive-tree Pearl	<i>Palpita vitrealis</i>	23-Sep	27-Oct	Rare	2006		
63.052	Rush Veneer	<i>Nomophila noctuella</i>	22-Mar	15-Nov	Migrant	2013	2013	2013
63.057	Garden Pebble	<i>Evergestis forficalis</i>	22-May	01-Oct	Common	2013	2013	2011
63.060	Chequered Pearl	<i>Evergestis pallidata</i>	26-Jun	31-Aug	Common	2013	2013	2013
63.062	Large Grey	<i>Scoparia subfusca</i>	17-Jun	17-Aug	Local	1996	2013	2011
63.064	Common Grey	<i>Scoparia ambigualis</i>	12-May	05-Sep	Common	2013	2013	2013
63.065	Northern Grey	<i>Scoparia ancipitella</i>	09-Jul	08-Sep	Local	1998	2011	2012
63.066	Meadow Grey	<i>Scoparia pyralella</i>	12-May	13-Aug	Common	2013	2013	2012
63.067	Little Grey	<i>Eudonia lacustrata</i>	19-Jun	21-Sep	Common	2013	2013	2011
63.068	Moorland Grey	<i>Eudonia murana</i>	24-May	11-Sep	Local	2013	2012	2013
63.069	Narrow-winged Grey	<i>Eudonia angustea</i>	08-Jul	01-Oct	Local		2012	2013
63.071	White-line Grey	<i>Eudonia lineola</i>	03-Jul	13-Aug	Local		2011	2008
63.072	Pied Grey	<i>Eudonia delunella</i>	19-Jun	31-Aug	Local	2012	2013	2011
63.073	Ground-moss Grey	<i>Eudonia truncicolella</i>	06-Jul	06-Sep	Local	2013	2013	2011
63.074	Small Grey	<i>Eudonia mercurella</i>	09-Jun	25-Sep	Common	2013	2012	2013
63.075	Marsh Grey	<i>Eudonia pallida</i>	11-Jul	29-Jul	Rare		2012	
63.076	Eyed Veneer	<i>Euchromius ocella</i>	06-Sep	06-Sep	Migrant	1865		
63.080	Garden Grass-veneer	<i>Chrysoteuchia culmella</i>	26-May	07-Aug	Abundant	2013	2013	2013
63.081	Inlaid Grass-veneer	<i>Crambus pascuella</i>	30-May	13-Aug	Common	2013	2013	2012
63.083	Marsh Grass-veneer	<i>Crambus uliginosellus</i>	02-Jul	24-Jul	Rare	2011	2002	2012
63.084	Heath Grass-veneer	<i>Crambus ericella</i>	28-Jun	09-Jul	Local	2011	2013	
63.085	Scarce Grass-veneer	<i>Crambus pratella</i>	16-Jun	05-Jul	Local		2012	2013
63.086	Hook-streak Grass-veneer	<i>Crambus lathoniellus</i>	17-May	18-Aug	Common	2013	2013	2013
63.088	Satin Grass-veneer	<i>Crambus perllella</i>	19-Jun	15-Aug	Common	2013	2013	2012
63.089	Common Grass-veneer	<i>Agriphila tristella</i>	23-Jun	09-Sep	Abundant	2013	2013	2013
63.090	Barred Grass-veneer	<i>Agriphila inquinatella</i>	24-Jun	08-Sep	Common	2012	2012	2012
63.091	White-steak Grass-veneer	<i>Agriphila latistria</i>	05-Aug	11-Sep	Rare			2013
63.092	Pale-streak Grass-veneer	<i>Agriphila selasella</i>	05-Aug	19-Aug	Rare		2012	1997
63.093	Straw Grass-veneer	<i>Agriphila straminella</i>	08-Jun	03-Sep	Abundant	2013	2013	2013

ABH	Vernacular	Scientific	Earliest	Latest	Status	VC72	VC73	VC74
63.095	Elbow-striped Grass-veneer	<i>Agriphila geniculea</i>	22-Jul	08-Sep	Local		2013	2013
63.099	Pearl Grass-veneer	<i>Catoptria pinella</i>	27-Jun	13-Aug	Local	2013	2013	
63.100	Silver-stripe Grass-veneer	<i>Catoptria margaritella</i>	22-Jun	12-Aug	Common	2013	2013	2013
63.101	Northern Grass-veneer	<i>Catoptria furcatellus</i>			Rare		2012	
63.102	Chequered Grass-veneer	<i>Catoptria falsella</i>	26-Jun	14-Aug	Local	2013	2013	2012
63.114	Brown China-mark	<i>Elophila nymphaeata</i>	05-Jun	24-Sep	Common	2013	2013	2013
63.115	Water Veneer	<i>Acentria ephemerella</i>	16-Jul	12-Aug	Local	2011	2003	1999
63.118	Beautiful China-mark	<i>Nymphula nitidulata</i>	07-Jun	17-Sep	Common	2013	2013	2012
63.122	Scarce Water-veneer	<i>Donacula mucronella</i>	09-Jun	08-Aug	Local	2013	2013	2012



## Unverified Species

Records of the following species have been submitted or appear in literature. At present there is insufficient evidence to corroborate these records and as such they are currently omitted from the County List.

ABH	Vernacular	Taxon
10.002	Small Carl	<i>Tischeria dodonaea</i>
11.005	Lichen Case-bearer	<i>Dahlica lichenella</i>
14.010		<i>Bucculatrix ulmella</i>
15.003	Clouded Slender	<i>Caloptilia populetorum</i>
15.013		<i>Caloptilia hemidactylella</i>
15.082	Dark Alder Midget	<i>Phyllonorycter kleemannella</i>
16.003	Apple Ermine	<i>Yponomeuta malinellus</i>
27.001		<i>Oegoconia quadripuncta</i>
35.118	Beet Moth	<i>Scrobipalpa ocellatella</i>
35.139		<i>Caryocolum huebneri</i>
35.143		<i>Teleiodes luculella</i>
38.048		<i>Elachista consortella</i>
49.027		<i>Pandemis dumetana</i>
49.084	Rusty Birch Button	<i>Acleris notana</i>
49.114		<i>Aethes hartmanniana</i>
49.158		<i>Hedya ochroleucana</i>
49.191	Black-edged Marble	<i>Endothenia nigricostana</i>
49.212		<i>Ancyliis apicella</i>
49.222	Northern Bell	<i>Rhopobota ustomaculana</i>
49.237	Black-brindled Bell	<i>Epinotia signatana</i>
49.289		<i>Epiblema costipunctana</i>
49.376		<i>Pammene aurita</i>
50.002	Leopard Moth	<i>Zeuzera pyrina</i>
54.010	Five-spot Burnet	<i>Zygaena trifolii trifolii</i>
62.023	Heather Knot-horn	<i>Pempelia palumbella</i>
62.053		<i>Ancylosis oblitella</i>
62.056	Scarce Clouded Knot-horn	<i>Homoeosoma nimbella</i>
63.006		<i>Pyrausta aurata</i>
63.024	White-spotted Sable Moth	<i>Anania funebris</i>

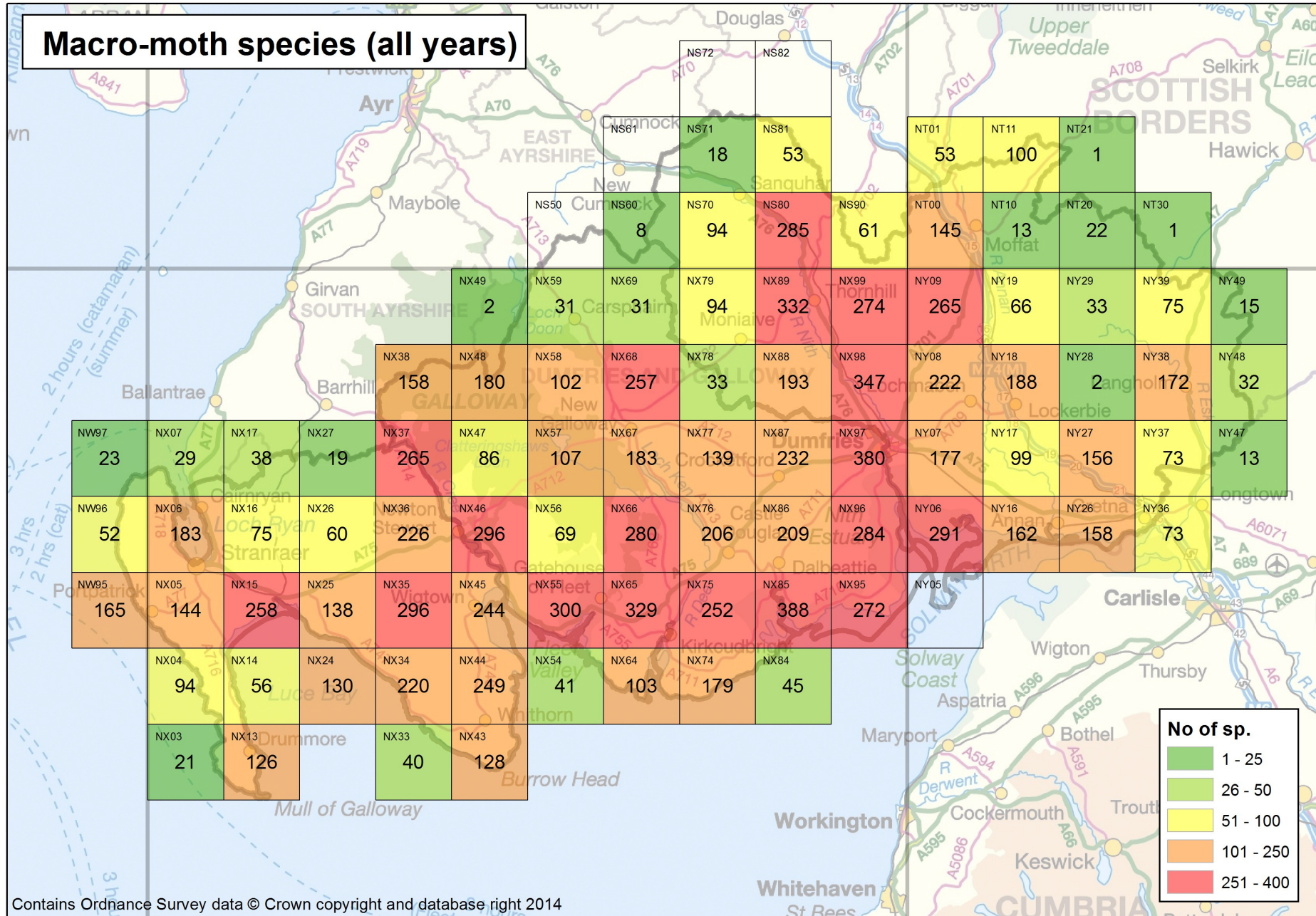
ABH	Vernacular	Taxon
63.032		<i>Udea fulvalis</i>
63.058		<i>Evergestis extimalis</i>
63.078		<i>Friedlanderia cicatricella</i>
63.116	Small China-mark	<i>Cataclysta lemnata</i>
63.117	Ringed China-mark	<i>Parapoynx stratiotata</i>
65.003	Barred Hook-tip	<i>Watsonalla cultraria</i>
65.014	Oak Lutestring	<i>Cymatophorima diluta hartwiegii</i>
66.003	The Lackey	<i>Malacosoma nuestria</i>
66.012	The Lappet	<i>Gastropacha quercifolia</i>
69.001	Lime Hawk-moth	<i>Mimas tiliae</i>
69.006	Privet Hawk-moth	<i>Sphinx ligustri</i>
69.007	Pine Hawk-moth	<i>Sphinx pinastri</i>
70.004	Least Carpet	<i>Idea rusticata</i>
70.006	Dwarf Cream Wave	<i>Idea fuscovenosa</i>
70.010	Dotted Border Wave	<i>Idea sylvestraria</i>
70.015	Small Scallop	<i>Idea emarginata</i>
70.020	Sub-angled Wave	<i>Scopula nigropunctata</i>
70.024	Small Blood-vein	<i>Scopula imitaria</i>
70.028	Rosy Wave	<i>Scopula emutaria</i>
70.035	False Mocha	<i>Cyclophora porata</i>
70.036	Maiden's Blush	<i>Cyclophora punctaria</i>
70.039	Oblique Striped	<i>Phibalapteryx virgata</i>
70.050	Balsam Carpet	<i>Xanthorhoe biriviata</i>
70.055	Large Twin-spot Carpet	<i>Xanthorhoe quadrifasiata</i>
70.056	Royal Mantle	<i>Catarhoe cuculata</i>
70.058	The Many-lined	<i>Costaconvexa polygrammata</i>
70.062	Wood Carpet	<i>Epirrhoe rivata</i>

ABH	Vernacular	Taxon
70.065	Sharp-angled Carpet	<i>Euphyia unangulata</i>
70.071	Yellow-ringed Carpet	<i>Entephria flavicinctata flavicinctata</i>
70.082	Juniper Carpet	<i>Thera juniperata juniperata</i>
70.088	Netted Carpet	<i>Eustroma reticulata</i>
70.113	Waved Carpet	<i>Hydrelia sylvata</i>
70.118	Brown Scallop	<i>Philereme vetulata</i>
70.119	Dark Umber	<i>Philereme transversata britannica</i>
70.125	Slender-striped Rufous	<i>Coenocalpe lapidata</i>
70.135	Heath Rivulet	<i>Perizoma minorata ericetata</i>
70.146	Haworth's Pug	<i>Eupithecia haworthiata</i>
70.148	Maple Pug	<i>Eupithecia inturbata</i>
70.150	Toadflax Pug	<i>Eupithecia linariata</i>
70.170	Marbled Pug	<i>Eupithecia irriguata</i>
70.180	Bleached Pug	<i>Eupithecia expallidata</i>
70.188	Bordered Pug	<i>Eupithecia succenturiata</i>
70.193	Lesser Treble-bar	<i>Aplocera efformata</i>
70.197	Grey Carpet	<i>Lithostege griseata</i>
70.208	Scorched Carpet	<i>Ligdia adustata</i>
70.211	Peacock Moth	<i>Macaria notata</i>
70.217	Rannoch Looper	<i>Macaria brunneata</i>
70.221	Little Thorn	<i>Cepphis advenaria</i>
70.235	Dusky Thorn	<i>Ennomos fuscantaria</i>
70.248	Brindled Beauty	<i>Lycia hirtaria</i>
70.250	Belted Beauty	<i>Lycia zonaria britannica</i>
70.260	Feathered Beauty	<i>Peribatodes secundaria</i>
70.268	Pale Oak Beauty	<i>Hypomecis punctinalis</i>
70.272	Square Spot	<i>Paradarisa consonaria</i>
70.273	Brindled White-spot	<i>Parectropis similaria</i>
70.285	Scotch Annulet	<i>Gnophos obfuscatus</i>
70.289	Black Mountain Moth	<i>Glacies coracina</i>
70.294	Yellow Belle	<i>Aspitates ochrearia</i>
70.300	Blotched Emerald	<i>Comibaena bajularia</i>
70.302	Small Emerald	<i>Hemistola chrysoprasaria</i>
71.024	Plumed Prominent	<i>Ptilophora plumigera</i>
71.026	Dusky Marbled Brown	<i>Gluphisia crenata vertunea</i>
72.010	Black Arches	<i>Lymantria monacha</i>
72.011	Gypsy Moth	<i>Lymantria dispar</i>
72.012	Brown-tail	<i>Euproctis chrysoorrhoea</i>
72.015	Pale Tussock	<i>Calliteara pudibunda</i>
72.021	Water Ermine	<i>Spilosoma urticae</i>
72.022	Muslin Moth	<i>Diaphora mendica</i>
72.030	Jersey Tiger	<i>Euplagia quadripunctaria</i>
72.032.1	Speckled Footman	<i>Coscinia cribaria arenaria</i>
72.039	Dotted Footman	<i>Pelosia muscerda</i>

ABH	Vernacular	Taxon
72.041	Four-spotted Footman	<i>Lithosia quadra</i>
72.056	Common Fan-foot	<i>Pechipogo strigilata</i>
73.039	The Sycamore	<i>Acronicta aceris</i>
73.044	Sweet Gale Moth	<i>Acronicta cinerea</i>
73.058	The Mullein	<i>Cucullia verbasci</i>
73.065	The Sprawler	<i>Asteroscopus sphinx</i>
73.072	Marbled Clover	<i>Heliothis viriplaca</i>
73.085	Marbled Green	<i>Nyctobrya muralis</i>
73.099	Vine's Rustic	<i>Hoplodrina ambigua</i>
73.139	Twin-spotted Wainscot	<i>Lenisa geminipuncta</i>
73.146	Least Minor	<i>Photodes captiuncula expolita</i>
73.152	Rush Wainscot	<i>Globia algae</i>
73.153	Union Rustic	<i>Pabulatrix pabulatricula</i>
73.157	Large Nutmeg	<i>Apamea anceps</i>
73.161	Crescent Striped	<i>Apamea oblonga</i>
73.164	Reddish Light Arches	<i>Apamea sublustris</i>
73.180	Barred Sallow	<i>Tiliacea aurago</i>
73.186	Beaded Chestnut	<i>Agrochola lychnidis</i>
73.211	Angle-striped Sallow	<i>Enargia paleacea</i>
73.240	Beautiful Arches	<i>Mniotype satura</i>
73.246	Lead-coloured Drab	<i>Orthosia populeti</i>
73.248	Northern Drab	<i>Orthosia opima</i>
73.259	Pale Shining Brown	<i>Polia bombycina</i>
73.260	Silvery Arches	<i>Polia hepatica</i>
73.262	Feathered Ear	<i>Pachetra sagittigera britannica</i>
73.263	Light Brocade	<i>Lacanobia w-latinum</i>
73.277	Bordered Gothic	<i>Sideridis reticulata marginosa</i>
73.278	Barrett's Marbled Coronet	<i>Conisania andalusica barrettii</i>
73.289	Striped Wainscot	<i>Mythimna pudorina</i>
73.335	Fen Square-spot	<i>Diarsia florida</i>
73.337	White-marked	<i>Cerastis leucographa</i>
73.344	Lunar Yellow Underwing	<i>Noctua orbona</i>
73.354	Square-spotted Clay	<i>Xestia stigmatica</i>
73.366	Plain Clay	<i>Eugnorisma depuncta</i>
74.003	Short-cloaked Moth	<i>Nola cucullatella</i>
74.007	Scarce Silver-lines	<i>Bena bicolorana</i>
B29		<i>Lozotaenia subocellana</i>
B52	Cumberland Pearl	<i>Udea alpinalis</i>
B98	Remm's Rustic	<i>Mesapamea remmi</i>



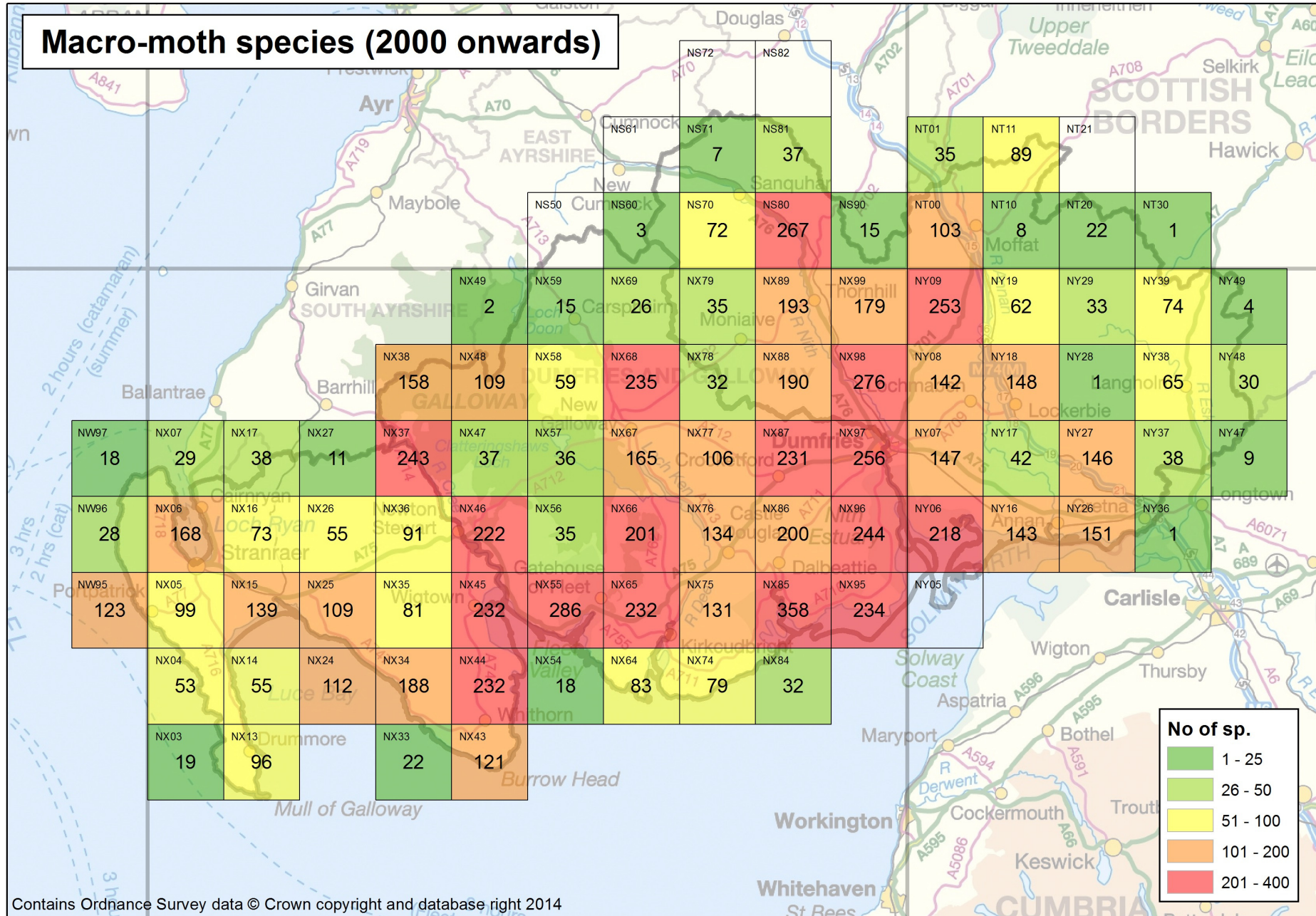
# Macro-moth species (all years)



Contains Ordnance Survey data © Crown copyright and database right 2014



# Macro-moth species (2000 onwards)



Contains Ordnance Survey data © Crown copyright and database right 2014